



First Chemical Handling

A One-Day Course for Technicians

- **Wednesday 21 May 2008, University of Leicester, 9.30am-4pm**

This course will provide technicians with information on how to find the names of chemicals and locate relevant hazard information. Led by **Joanna Sacks** of **CLEAPSS** the day will involve a number of demonstration and paper exercises to show how technicians can use information in **CLEAPSS** literature on emergency procedures, storage and disposal.

The day will comprise two practical sessions to give delegates the confidence to cope with emergency spills and help them prepare risk assessments for new activities as well as covering a range of issues and topics encountered in school or college.

Topics covered will include:

- About **CLEAPSS**
- Chemical names
- *Hazcards*
- Hazard labelling
- A&E
- Personal protection – eye protection & gloves
- Risk assessing
- Examples of reducing risk using lower concentrations & smaller volumes
- Storage of chemicals
- Spills
- Disposal of chemicals
- Fire!

Throughout the day there will be ample opportunity to ask questions on individual chemicals and other matters pertaining to chemistry.

How to book

All our courses are available on a first come, first served basis. The fee for a whole day course covers a buffet lunch and refreshments throughout the day plus all course materials. Additional discounts are available in some circumstances e.g. there will be a reduction of £20 if more than one delegate from the same school books on the same course.

To make a booking:

- 1 telephone us on 0116 252 3771 or
- 2 complete and return the form below

Please fill out the booking form. On receipt of your form we will confirm your booking and issue a pro forma invoice. Payment is required before the date of the course. We reserve the right to make a cancellation charge of £20 for any booking cancelled less than a week before the date of the course. The full fee is payable if you do not cancel your booking and do not attend the course. We also reserve the right to amend course programmes where circumstances dictate.

If you need further information, please contact us on:

• Tel: 0116 252 3771 • Fax: 0116 252 5772 • E-mail: slcem@le.ac.uk

Course title	Venue	Date(s)	Full Fee	No. required	Sub. Fee*	No. required
First Chemical Handling A One-Day Course for Technicians	Leicester	21/05/08	£175	£85

* Subsidised fees are applicable for all maintained schools in England.

Invoice details: (Please use CAPITALS)

Invoice contact name

Delegate name(s)

Delegate email(s)

School/College

Address

.....Postcode.....

TelephoneDate

Please return to:

Science Learning Centre East Midlands, University of Leicester,
School of Education, 21 University Road, Leicester LE1 7RF



50% Discount

If you attend 4 of our courses in an academic year you can have 50% off your next course! Contact us for further details.

Full or Subsidised fee?

All maintained or state funded secondary schools can take advantage of our subsidised fees.

The national network of Science Learning Centres is a joint initiative by the Department for Children, Schools and Families and the Wellcome Trust. Science Learning Centre East Midlands is run by a consortium of the University of Leicester, the University of Nottingham and Bishop Grosseteste University Lincoln.

www.le.ac.uk/slcem



Science
LEARNING CENTRES

Second Chemical handling

A One-Day Course for Technicians

- **Thursday 22 May 2008, University of Leicester, 9.30am-4pm**

This course is suitable for technicians who work specifically in chemistry and/or prepare materials involving chemicals for GCSE, GNVQ and A level work. (It is useful, but not essential if delegates have attended the First Chemical Handling course before attending this session.)

Led by **Bob Worley** of **CLEAPSS** the day will provide delegates with details of how risk assessments are carried out with special emphasis on chemicals. This will involve identifying hazards and how effective control measures can be put in place.

There will be an emphasis on making solutions, especially those concerning corrosive acids as well as a practical session on preparing salts. The course ends with a number of demonstrations which technicians frequently have to prepare.

Delegates are invited to bring a pH meter and probe with them which will be checked. In addition, recent developments in instruments used in chemistry will be covered.

Topics will include:

- Making up solutions – Recipe cards
- Purifying water
- Risk assessing your own work using Recipe & Hazcards
- pH meters, probes & other instruments in chemistry
- Preparing salts
- Titrating
- Solving COSHH problems - Hazcards
- Thermite reaction & other demonstrations

Throughout the day there will be ample opportunity to ask questions.

How to book

All our courses are available on a first come, first served basis. The fee for a whole day course covers a buffet lunch and refreshments throughout the day plus all course materials. Additional discounts are available in some circumstances e.g. there will be a reduction of £20 if more than one delegate from the same school books on the same course.

To make a booking:

- 1 telephone us on 0116 252 3771 or
- 2 complete and return the form below

Please fill out the booking form. On receipt of your form we will confirm your booking and issue a pro forma invoice. Payment is required before the date of the course. We reserve the right to make a cancellation charge of £20 for any booking cancelled less than a week before the date of the course. The full fee is payable if you do not cancel your booking and do not attend the course. We also reserve the right to amend course programmes where circumstances dictate.

If you need further information, please contact us on:

• Tel: 0116 252 3771 • Fax: 0116 252 5772 • E-mail: slcem@le.ac.uk

Course title	Venue	Date(s)	Full Fee	No. required	Sub. Fee*	No. required
Second Chemical handling A One-Day Course for Technicians	Leicester	22/05/08	£175	£85

* Subsidised fees are applicable for all maintained schools in England.

Invoice details: (Please use CAPITALS)

Invoice contact name

Delegate name(s)

Delegate email(s)

School/College

Address

.....Postcode.....

TelephoneDate.....

Please return to:

Science Learning Centre East Midlands, University of Leicester,
School of Education, 21 University Road, Leicester LE1 7RF

50% Discount

If you attend 4 of our courses in an academic year you can have 50% off your next course! Contact us for further details.



Science
LEARNING CENTRES

Full or Subsidised fee?

All maintained or state funded secondary schools can take advantage of our subsidised fees.

The national network of Science Learning Centres is a joint initiative by the Department for Children, Schools and Families and the Wellcome Trust. Science Learning Centre East Midlands is run by a consortium of the University of Leicester, the University of Nottingham and Bishop Grosseteste University Lincoln.

www.le.ac.uk/slcem



Clone that gene!

A 2 Day Gene Technology Course for Post 16 Teachers & Technicians

- **Wednesday 11 June 2008, 10am-5.30pm & Thursday 12 June 2008, 9.15am-5pm, University of Leicester**

New drug discovery, gene therapy and genetically modified food, to name a few, are all based on recombinant DNA technologies or 'gene cloning'. These new technologies and their applications are often misunderstood by society.

This new and exciting **two day residential course** is focussed on the practical aspects of DNA recombinant technologies and has been designed by **GENIE** - the Centre for Excellence in Teaching and Learning (CETL) in Genetics, based at the University of Leicester - in collaboration with the **Science Learning Centre East Midlands**.

The Department of Genetics at the University of Leicester is renowned for its pioneering research and excellence in teaching and learning. It is also widely known as the 'birthplace' of DNA fingerprinting discovered by Professor Sir Alec Jeffreys.

The course has been specially designed for teachers and technicians involved in the teaching and support of post 16 biology who wish to acquired practical experience of 'gene cloning', working alongside colleagues who are at the forefront of genetic research.

Aspects of gene technology can be found in all the post 16 specifications and this course will offer delegates the opportunity to see, and participate in, at first hand, the stages involved in these technologies and how they can be used.

The cost of the course includes **all** materials, refreshments throughout both days and one nights' accommodation. It is hoped that all delegates will attend a course dinner at the end of the first day.



Students & teachers at GENIE



Building on the synergy between world-class science and genetics education, the GENIE CETL is leading the development of innovative approaches in and resources for genetics teaching and learning, not only for the Higher Education sector, but also for schools and colleges, healthcare professionals and the general public.

Central to this is the Virtual Genetics Education Centre (www.le.ac.uk/genetics/genie/vgec), an expanding web-based collection of evaluated resources and cross-references. The GENIE CETL was also awarded funding for the complete refurbishment of a number of teaching laboratories, as well as the establishment of two GENIE outreach laboratories, where this new CPD course will be held.

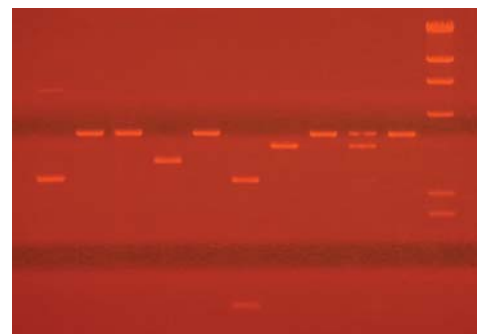
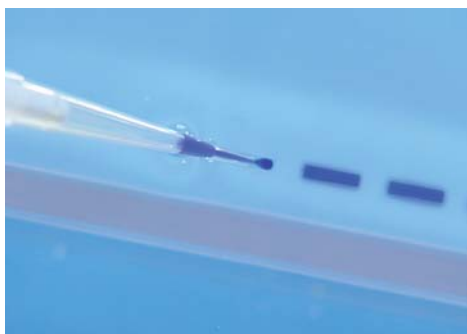
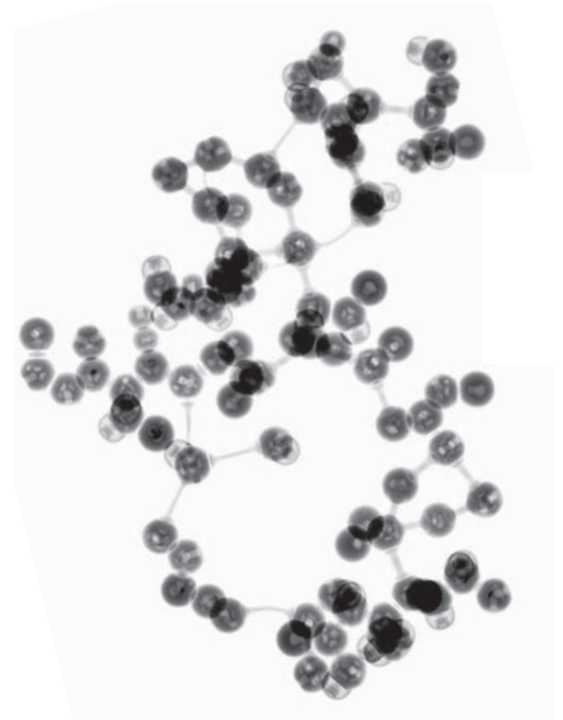
The aim of the course is to allow teachers and technicians to:

- Become aware of the techniques used in cutting edge genetic research
- Practice techniques in a safe, controlled environment
- Be aware of the health & safety regulations
- Become confident in carrying out the techniques so they can be replicated in school/college
- Receive more up to date information than current textbooks on gene technology

The two days will be spent performing a series of practical experimental techniques used by researchers to clone and insert genes into plasmids and then testing to see if their practice has been successful. The techniques covered will include:

- Ligation
- Manipulation of live bacteria
- Selection of clones
- Plasmid extraction
- Restriction digestion
- Gel electrophoresis

In addition to the practical elements there will be a presentation on the ethics of cloning, advice on experimental planning and regulation, as well as plenty of opportunities to ask questions throughout both days. There will also be a session concentrating on transferring what has been learnt into a school/college environment. All delegates will receive complete and thorough protocols for replication of the techniques in school or college.



Programme

Day 1: Wednesday 11 June 2008

- 10.00am Registration & refreshments
- 10.30am Introduction to laboratory safety, planning and cloning regulation for schools/colleges
- 11.00am Protocols overview
- 11.30am Practical session: Principles of ligation
Ligation of insert into recipient plasmid
- 12.30pm Lunch
- 1.30pm Practical session: Principle of *E.coli* transformation
Transformation with products of ligation
- 3.30pm Practical session: Manipulation of live bacteria and disposal of biological waste
Health & safety: Do's and Don'ts!
Practical session: Petri dish inoculation
- 4.30pm Presentation: 'Ethics of cloning'
- 5.30pm Day ends

Those delegates staying overnight then travel to accommodation.

- 7.00pm Evening meal

Day 2: Thursday 12 June 2008

- 9.15am Registration
- 9.30am Practical session: Blue/White screening principle
- 10.00am Practical session: Plasmid extraction
Principles of extraction; how the column works
- 10.45am Morning coffee (with opportunities for questions & answers)
- 11.15am Practical session: Restriction digests of extracted plasmids
Principle of digestions including restriction endonucleases
- 12.00pm Transferring protocols to the classroom
- 1.00pm Lunch
- 1.45pm Principles of gel electrophoresis (video)
Practical session: Gel preparation & loading
- 2.45pm Practical session: Gel electrophoresis
- 4.15pm Results analysis
Q & A session, evaluation
- 5.00pm Day ends



Science Learning Centre East Midlands Course booking form

Course title	Venue	Date(s)	Full Fee	No. required	Sub. Fee*	No. required
Clone that gene!	Leicester	11/06/08 & 12/06/08	£250	£185

* Subsidised fees are applicable for all maintained schools in England.

How to book

All our courses are available on a first come first served basis. The fee for a whole day course covers a buffet lunch and refreshments throughout the day plus all course materials. Additional discounts are available in some circumstances e.g. there will be a reduction of £20 if more than one delegate from the same school books on the same course.

To make a booking:

- 1 telephone us on 0116 252 3771 or
- 2 complete and return the form below

On receipt of your form we will confirm your booking and issue a pro forma invoice. Payment is required before the date of the course. We make reserve the right to make a cancellation charge of £20 for any booking cancelled less than a week before the date of the course. The full fee is payable if you do not cancel your booking and do not attend the course. We also reserve the right to amend course programmes where circumstances dictate.

Invoice details: (Please use CAPITALS)

Invoice contact name

Delegate name(s).....

Delegate email(s).....

School/College

Address

.....Postcode

TelephoneDate

Accommodation required (included) Yes No (please tick)

Delegate will attend evening meal (included) Yes No (please tick)

Please return to:

Science Learning Centre East Midlands, University of Leicester, School of Education, 21 University Road, Leicester LE1 7RF

Science
LEARNING CENTRES



The national network of Science Learning Centres is a joint initiative by the Department for Children, Schools and Families and the Wellcome Trust. The Science Learning Centre East Midlands is run by a consortium of the University of Leicester, the University of Nottingham and Bishop Grosseteste University College Lincoln.

www.le.ac.uk/slcm



Science
LEARNING CENTRES

Basic Practical Microbiology for Secondary Schools

- **Wednesday 11 June 2008, University of Leicester, 9am-5pm**

This accredited, comprehensive, one day course for secondary teachers and their technicians will provide basic training in the techniques needed to carry out interesting microbiology investigations safely in school or college. The course is suitable for both complete beginners and those wishing to 'brush up' their practical microbiology skills.

The course will be led by **Dr John Grainger**, Chairman of MISAC and **Dr John Schollar** from the National Centre for Biotechnology Education. The Society for General Microbiology also aims to give delegates the opportunity to keep up-to-date with current issues and research in microbiology, within the context of the National Curriculum and examining body specifications.

The day will be comprised of a number of short presentations and plenty of hands-on activities. Safety in all aspects of microbiology practice will be emphasised throughout the day. The course will conclude with a short answer theory test of 20 questions and a practical examination, in order to gain accreditation (from the Society for General Microbiology). In addition to course materials that accompany the activities, each delegate will receive a set of factsheets and Microbiology for Secondary Schools - a set of 21 investigations for use back in school or college.

The day will cover a range of microbiological techniques and processes including:

- An introduction to microbiology, aseptic technique and safety
- Preparation: risk assessment and good microbiological laboratory practice
- Resources: equipment, apparatus and materials
- Media, equipment and sterilisation
- Basic practical techniques
- Microbiology in action:
 - Testing sensitivity to antibacterial substances
 - Staining bacteria and yeasts
- Examination for certification
 - Theory examination
 - Practical examination (preparing a streak plate; transferring culture from tube to tube by loop; transferring measured volume of sterile solution from bottle to bottle by pipette)

*"Expectations exceeded!
Excellent blend of practical
techniques and theory. Easily
the best in service training I
have been on."
Northampton College*

The Science Learning Centre East Midlands is pleased to announce that the SGM will be supporting this course further by offering £100 towards supply cover costs for all teachers completing the course and achieving the standard required in the examination. In addition, should delegates' schools be members of SGM the course cost will be discounted by a further £10.

How to book

All our courses are available on a first come, first served basis. The fee for a whole day course covers a buffet lunch and refreshments throughout the day plus all course materials. Additional discounts are available in some circumstances e.g. there will be a reduction of £20 if more than one delegate from the same school books on the same course.

To make a booking:

- 1 telephone us on 0116 252 3771 or
- 2 complete and return the form below

We will then confirm your booking and issue a pro forma invoice. Payment is required before the date of the course. We reserve the right to make a cancellation charge of £20 for any booking cancelled less than a week before the date of the course. The full fee is payable if you do not cancel your booking and do not attend the course. We also reserve the right to amend the course programmes where circumstances dictate.

If you need further information, please contact us on:

• Tel: 0116 252 3771 • Fax: 0116 252 5772 • E-mail: slcem@le.ac.uk

Course title	Venue	Date(s)	Full Fee	No. required	Sub. Fee*	No. required
Basic Practical Microbiology for Secondary Schools	Leicester	11/06/08	£65	£45

* Subsidised fees are applicable for all maintained schools in England.

Invoice details:

Invoice contact name

Delegate name(s)

Delegate email(s)

School/College

Address

.....Postcode.....

TelephoneDate

Please return to:

Science Learning Centre East Midlands, University of Leicester, School of Education, 21 University Road, Leicester LE1 7RF



Science
LEARNING CENTRES

50% Discount

If you attend 4 of our courses in an academic year you can have 50% off your next course! Contact us for further details.

Full or Subsidised fee?

All maintained or state funded secondary schools can take advantage of our subsidised fees.

The national network of Science Learning Centres is a joint initiative by the Department for Children, Schools and Families and the Wellcome Trust. Science Learning Centre East Midlands is run by a consortium of the University of Leicester, the University of Nottingham and Bishop Grosseteste University College Lincoln.

www.le.ac.uk/slcem



Science
LEARNING CENTRES

Advanced Practical Microbiology for Secondary Schools

Measuring Microbial Growth

- **Thursday 12 June 2008, University of Leicester, 9am-5pm**

Many practical microbiology investigations in schools and colleges involve an assessment of microbial growth. However, there are several different approaches to measuring growth and it is of vital importance to choose one that is appropriate for a particular activity.

This accredited (by the Society for General Microbiology), one-day, practical based course for secondary teachers and their technicians will deal with a variety of suitable methods. Delegates must be competent in basic microbiological techniques through having completed an appropriate training course.

The course will be led by **Dr John Grainger**, Chairman of MISAC and **Dr John Schollar** from the National Centre for Biotechnology Education. The Society for General Microbiology (SGM) also aims to give delegates the opportunity to keep up-to-date with current issues and research in microbiology, within the context of the National Curriculum and examination body specifications.

There will be an emphasis throughout the day on hands-on activities in the context of investigations relevant to the curriculum, e.g. food production and preservation, with careful attention to safety issues. The methods used will include:

- turbidity measurement
- acid production
- colony counts
- microscopical procedures.

The use of data loggers and generation of data for statistical analysis will also be considered.

The Science Learning Centre East Midlands is pleased to announce that the SGM will be supporting this course further by offering £100 towards supply cover costs for all teachers completing the course and achieving the required standard. In addition, should delegates' schools be members of SGM the course cost will be discounted by a further £10.

How to book

All our courses are available on a first come, first served basis. The fee for a whole day course covers a buffet lunch and refreshments throughout the day plus all course materials. Additional discounts are available in some circumstances e.g. there will be a reduction of £20 if more than one delegate from the same school books on the same course.

To make a booking:

- 1 telephone us on 0116 252 3771 or
- 2 complete and return the form below

Please fill out the booking form. On receipt of your form we will confirm your booking and issue a pro forma invoice. Payment is required before the date of the course. We reserve the right to make a cancellation charge of £20 for any booking cancelled less than a week before the date of the course. The full fee is payable if you do not cancel your booking and do not attend the course. We also reserve the right to amend course programmes where circumstances dictate.

If you need further information, please contact us on:

• Tel: 0116 252 3771 • Fax: 0116 252 5772 • E-mail: slcem@le.ac.uk

Course title	Venue	Date(s)	Full Fee	No. required	Sub. Fee*	No. required
Advanced Practical Microbiology for Secondary Schools	Leicester	12/06/08	£65	£45

* Subsidised fees are applicable for all maintained schools in England.

Invoice details: (Please use CAPITALS)

Invoice contact name

Delegate name(s)

Delegate email(s)

School/College

Address

.....Postcode.....

TelephoneDate

Please return to:

Science Learning Centre East Midlands, University of Leicester,
School of Education, 21 University Road, Leicester LE1 7RF



50% Discount

If you attend 4 of our courses in an academic year you can have 50% off your next course! Contact us for further details.

Full or Subsidised fee?

All maintained or state funded secondary schools can take advantage of our subsidised fees.

The national network of Science Learning Centres is a joint initiative by the Department for Children, Schools and Families and the Wellcome Trust. Science Learning Centre East Midlands is run by a consortium of the University of Leicester, the University of Nottingham and Bishop Grosseteste University Lincoln.

www.le.ac.uk/slcem



Science
LEARNING CENTRES

Science Technician CPD Conference 2008

• **Friday 13 June 2008, John Cleveland College Hinckley, 9.30am-4.00pm**

An exciting day of hands-on sessions designed especially for school science technicians. The day has been brought together by a collaboration between [John Cleveland Specialist Science College](#) and the [Science Learning Centre East Midlands](#). The day will comprise a keynote talk by [Dr Chris Willmott](#) from the University of Leicester on '*Stem cells - What's all the fuss about?*', followed by a range of hands-on sessions.

Delegates will have the opportunity to choose four different hands-on sessions to attend. The sessions cover a variety of skills technicians encounter in their work in secondary schools. The aim of the day is to gain more confidence in skills, share good practice and network with other technicians from across the region.

Morning Sessions:

Geology Rocks!!

Dr Ruth Richards, John Cleveland College

Footprints, Fingerprints & Forensic Science

Suzanne Windridge, Ashby School

Foundation Degree Course for School Science Technicians

Rosemary Gray & Chris Dove, University of Leicester

What are 'Smart' Materials?

Julie Davies, Timstar

Afternoon Sessions:

Bugs, Bungs & Spirometers

Dave Corbett, John Cleveland College

Micro Science

Peter Scott, EDU-LAB Ltd. (session sponsored by Timstar)

Future Generations (Energy supplies)

Dr Peter Evans, Energy Futures Lab.

Introduction to ICT in a laboratory

Stephen Rice & Phil Leach, Science Learning Centre & John Cleveland College

Delegates have the opportunity to attend 2 morning and 2 afternoon sessions. Please indicate these on the booking form overleaf.

How to book

All our courses are available on a first come, first served basis. The fee for a whole day course covers a buffet lunch and refreshments throughout the day plus all course materials.

To make a booking:

- 1 telephone us on 0116 252 3771 or
- 2 complete and return the form below

We will then confirm your booking and issue a pro forma invoice. Payment is required four weeks before the date of the course. We reserve the right to make a cancellation charge for any booking cancelled less than two weeks before the date of the course. The full fee is payable if you do not cancel your booking and do not attend the course. We also reserve the right to amend the course programmes where circumstances dictate. If you need further information, please contact us on:

• Tel: 0116 252 3771 • Fax: 0116 252 5772 • E-mail: slcem@le.ac.uk

Course title	Venue	Date(s)	Full Fee	No. required	Sub. Fee*	No. required
Science Technician CPD Conference 2008	Hinckley	13/06/08	£30	£30

Please indicate with a tick (✓) your preferred sessions. Please choose 2 for the morning and 2 for the afternoon.

Morning Session Titles Please tick (maximum of 2)

Geology Rocks!! Footprints, Fingerprints & Forensic Science Foundation Degree What are 'Smart' Materials?

Afternoon Session Titles Please tick (maximum of 2)

Bugs, Bungs & Respirometers Micro Science Future Generations Introduction to ICT in a Laboratory

Please note: We will do our best to allocate you your preferred sessions but this cannot be guaranteed as we wish to ensure group sizes remain manageable.

* Subsidised fees are applicable for all maintained schools in England.

Invoice details:

Invoice contact name

Delegate name(s)

Delegate(s) email(s)

School/College

Address

.....Postcode.....

TelephoneDate



Please return to:

Science Learning Centre East Midlands, University of Leicester, School of Education,
21 University Road, Leicester LE1 7RF

Science
LEARNING CENTRES

The national network of Science Learning Centres is a joint initiative by the Department for Children, Schools & Families and the Wellcome Trust. Science Learning Centre East Midlands is run by a consortium of the University of Leicester, the University of Nottingham and Bishop Grosseteste University College Lincoln.

www.le.ac.uk/slcem



Skills for Science Technicians

• **Wednesday 18 June 2008, John Cleveland College, Hinckley, 9.45am-4pm**

This new and exciting course for science technicians builds upon the highly successful 'Hints & Tips' course run previously. The course has been devised and will be led by **Dave Corbett**, **Sue Cure** and **Phil Leach**, Science Technicians at John Cleveland College.

The day will comprise 2 workshops with activities in biology, chemistry and physics and will illustrate how to support some of the more difficult practical procedures that take place in a large science department. Delegates will be able to choose 2 sessions to attend. In addition they will have plenty of opportunities to ask questions, try out practical procedures and hone skills. The day will be particularly suitable for inexperienced science technicians.

Biology

- Glass cutting & bending
- Making spreaders & inoculation loops
- Working with acrylic tubing
- The safe way to insert tubing into bungs
- Freeing stuck bungs/stop taps/lids/gas syringes
- Using & setting up a microscope correctly
- Maintenance of microscopes/how to strip & clean microscopes

Chemistry

- Serial dilutions
- Using a colorimeter/How to choose the correct filter
- Understanding the difference between strong/concentrated and weak/dilute acids
- How to make up accurate solutions
- Simple titration technique/how to choose the correct pH indicator
- Setting up an electrolysis circuit/how to clean electrodes/how to make electrode holders
- Paper chromatography
- Small scale preparation and testing of gases
- How to make and set up the apparatus to demonstrate the products of combustion
- How to make your own cobalt chloride paper

Physics

- Cleaning & maintenance of a Van de Graff generator
- How to use a multimeter.
- Resistor colour codes including $V = I \times R$ & $P = V \times I$ calculations
- Simple soldering techniques.
- How to set up a ripple tank.
- Set up and use a Cathode Ray Oscilloscope.
- How to make a bulb holder using drainpipe

How to book

All our courses are available on a first come, first served basis. The fee for a whole day course covers a buffet lunch and refreshments throughout the day plus all course materials. Additional discounts are available in some circumstances e.g. there will be a reduction of £20 if more than one delegate from the same school books on the same course.

To make a booking:

- 1 telephone us on 0116 252 3771 or
- 2 complete and return the form below

Please fill out the booking form. On receipt of your form we will confirm your booking and issue a pro forma invoice. Payment is required before the date of the course. We reserve the right to make a cancellation charge of £20 for any booking cancelled less than a week before the date of the course. The full fee is payable if you do not cancel your booking and do not attend the course. We also reserve the right to amend course programmes where circumstances dictate.

If you need further information, please contact us on:

• Tel: 0116 252 3771 • Fax: 0116 252 5772 • E-mail: slcem@le.ac.uk

Course title	Venue	Date(s)	Full Fee	No. required	Sub. Fee*	No. required
Skills for Science Technicians	Hinckley	18/06/08	£105	£55

* Subsidised fees are applicable for all maintained schools in England.

Please choose 2 workshops Biology Chemistry Physics (please tick)

Invoice details: (Please use CAPITALS)

Invoice contact name

Delegate name(s)

Delegate email(s)

School/College.....

Address

.....Postcode.....

TelephoneDate

Please return to:

Science Learning Centre East Midlands, University of Leicester,
School of Education, 21 University Road, Leicester LE1 7RF

50% Discount

If you attend 4 of our courses in an academic year you can have 50% off your next course! Contact us for further details.

Science
LEARNING CENTRES



Full or Subsidised fee?

All maintained or state funded secondary schools can take advantage of our subsidised fees.

The national network of Science Learning Centres is a joint initiative by the Department for Children, Schools and Families and the Wellcome Trust. Science Learning Centre East Midlands is run by a consortium of the University of Leicester, the University of Nottingham and Bishop Grosseteste University College Lincoln.

www.le.ac.uk/slcem