



Pottery reconstruction

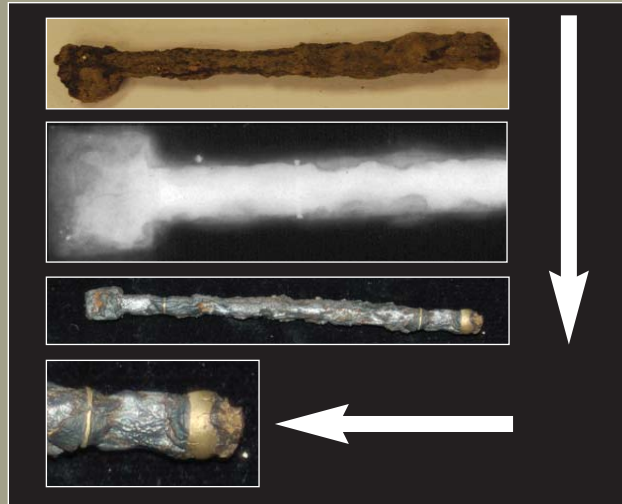
- Reconstruction for display using reversible techniques

Freeze drying

- Leather artefacts
- Wood

Wall plaster analysis

- Analysis of chemical composition of the different layers
- Tracing the source of the raw materials
- Identification of pigments



Contact Details

Nick Cooper (Post-excavation Manager)
 University of Leicester
 Archaeological Services (ULAS)
 University of Leicester,
 University Road,
 Leicester LE1 7RH

T: +44 (0)116 252 2848
 F: +44 (0)116 252 2614
 E: ulas@le.ac.uk
 w: www.le.ac.uk/ulas



INVESTOR IN PEOPLE



University of Leicester



University of Leicester

University of Leicester
Archaeological Services (ULAS)

Conservation Services



- Consultancy
- X-Radiography
- Artefact Cleaning
- Stabilisation

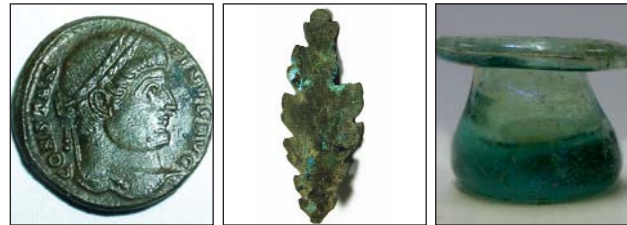
About ULAS

University of Leicester Archaeological Services is one of the largest independent archaeological contractors in the country, embedded within a leading academic department and a Registered Organisation with the Institute of Field Archaeologists.

Our team of specialists, supported by the academic expertise and facilities of the University, offers a comprehensive service in all areas of post-excavation work, which complements our proven track record of fieldwork on large-scale, multi-period urban and rural sites.

About Dr Graham Morgan

Dr Graham Morgan FIIC ACR, formerly with the University of Leicester, is an accredited conservator with over 40 years experience. He has worked with ULAS for over 10 years on a wide range of artefacts, also specialising in materials analysis and identification.



Stabilisation

Chemical stabilisation of:

- Glass
- Metal
- Organic materials
- Shale

Artefact cleaning

- Chemical cleaning
- Mechanical cleaning



X-Radiography

Carried out using in-house facilities including EDXRF spectrometry and portable digital X-ray

- Metal and other artefacts

Identification

- Small artefacts
- Wood
- Textile

