



## Areas of special expertise

In addition to routine faunal analysis we have particular research expertise in the following areas:

- Medieval and post-medieval diet and agriculture
- Prehistoric and Romano-British sites
- Urban provisioning
- Palaeopathology
- Biometry
- Bird bone analysis

## Other ULAS Post-Excavation services

For integrated analysis of all finds, including animal bone, ULAS also offers:

- Ceramics analysis
- Lithics analysis
- Human bone analysis
- Environmental archaeology
- Illustration



### Contact Details

Jennifer Browning  
 University of Leicester Archaeological Services (ULAS)  
 University of Leicester,  
 University Road,  
 Leicester LE1 7RH  
 T: 0116 252 2848  
 E: [ulas@le.ac.uk](mailto:ulas@le.ac.uk)

Dr Richard Thomas  
 School of Archaeology and Ancient History  
 T: 0116 252 3343  
 E: [rmt12@le.ac.uk](mailto:rmt12@le.ac.uk)  
 w: [www.le.ac.uk/ulas](http://www.le.ac.uk/ulas)



INVESTOR IN PEOPLE



University of Leicester  
Archaeological Services (ULAS)

## Animal Bone Consultancy Services



- Assessment
- Analysis
- Consultancy

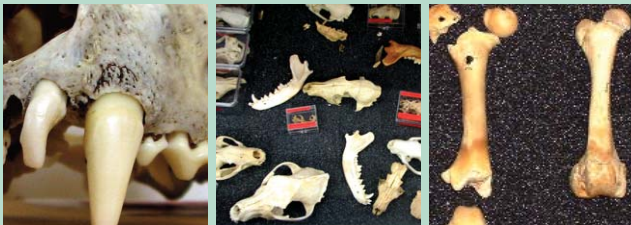
## About ULAS

University of Leicester Archaeological Services is one of the largest independent archaeological contractors in the country, embedded within a leading academic department and a Registered Organisation with the Institute of Field Archaeologists.

Our team of specialists, supported by the academic expertise and facilities of the University, offers a comprehensive service in all areas of post-excavation work, which complements our proven track record of fieldwork on large-scale, multi-period urban and rural sites.

## Animal Bone Consultancy Services

The team provides a complete faunal analysis facility for British and north-west European archaeological investigations, covering material from the Palaeolithic to the present day. Located in a dedicated laboratory, our group comprises members of academic staff (Dr. Richard Thomas and Dr. Jago Cooper), an in-house faunal specialist (Jennifer Browning), a team of local freelance zooarchaeologists and technical staff. We are committed to flexibility, quality and efficiency in our working practices and seek to enrich our understanding of the ways in which humans and animals have interacted in the past through inter-disciplinary approaches.



## What we offer

We provide a comprehensive range of analytical services at competitive rates, which include:

- Pre-excavation planning advice
- On-site consultancy
- Production of assessment reports
- Detailed recording, analysis and interpretation of all types of animal bone assemblages

All our published reports adhere to the guidelines set out by English Heritage in MAP2 and MoRPHE and are subject to internal peer-review for quality assurance. We tailor our analyses to meet the specific needs of projects and welcome the opportunity to work with other members of project teams to provide the fullest possible understanding of past societies.



## Our facilities

The team has access to a dedicated bone laboratory. Our key asset is a reference collection of modern and archaeological specimens of animal bone. Started in 1982, this now comprises over 600, mostly European, specimens including:

- Mammals
- Amphibians
- Reptiles
- Birds
- Fish

### In addition we also have facilities to undertake:

- Photography
- Radiography
- Microscopic analysis

