



### Human and Animal Bone Analysis

Our experienced team offers a complete assessment, analysis and reporting service covering:

- Full skeletal analysis
- Pathological analysis
- Cremated remains
- On-site consultancy

### Environmental Archaeology

Our team of specialists provide a complete assessment and analysis report service including:

- Processing of samples for plant and animal remains
- Assessment of processed samples
- Analysis of plant microfossils
- Analysis of oyster shells
- Identification of charcoal
- Starch analysis



### Historic Buildings Survey

- Survey and recording
- Rapid Assessment
- Heritage Impact Assessment
- Interpretation and reconstruction drawing
- Historical Research
- Consultancy and advice

### Contact Details

Richard Buckley or Patrick Clay  
 University of Leicester Archaeological Services (ULAS)  
 University of Leicester,  
 University Road,  
 Leicester LE1 7RH

T: +44 (0)116 252 2848  
 F: +44 (0)116 252 2614  
 E: [ulas@le.ac.uk](mailto:ulas@le.ac.uk)  
 w: [www.le.ac.uk/ulas](http://www.le.ac.uk/ulas)



INVESTOR IN PEOPLE



University of Leicester  
 Archaeological Services (ULAS)

# Archaeological Services

- Development Advice
- Survey & Evaluation
- Excavation & Watching Briefs
- Artefact Analysis
- Conservation
- Human & Animal Bone Analysis
- Environmental Archaeology
- Historic Buildings Survey



## About ULAS

University of Leicester Archaeological Services is one of the largest independent archaeological contractors in the country, embedded within a leading academic department and is a Registered Organisation with the Institute for Archaeologists (IfA).

Our team of specialists, supported by the academic expertise and facilities of the University, offers a comprehensive service in all areas of post-excavation work, which complements our proven track record of fieldwork on large-scale, multi-period urban and rural sites. In addition we are able to offer a wide-ranging conservation service and have access to new EDXRF and portable digital X-ray equipment.

## Development Advice

Archaeology is now firmly established within the planning process. With our experience in dealing with a wide variety of archaeological projects, archaeology can be an asset rather than a problem for development.

We are experienced in:

- Desk-Based Assessments
- Preparing 'Archaeology and Cultural Heritage' sections for Environmental Statements
- Surface and deposit modelling
- Assisting with re-design and mitigation strategies



## Survey and Evaluation

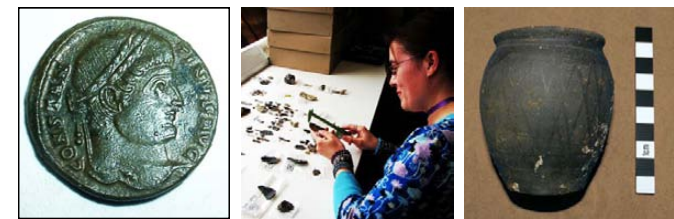
Working cost-effectively to the highest standards, we can assess the archaeological potential of an area using a variety of methods including:

- Fieldwalking
- Earthwork and geophysical surveys
- Test pitting
- Trial trenching

## Excavation and Watching Briefs

Working in advance of, or alongside, development we are experienced in:

- Small to large scale urban and rural projects
- Deeply buried alluvial sites
- Industrial archaeology
- Funerary archaeology
- Waterlogged sites
- Palaeolithic archaeology



## Artefact Analysis

With specialists in ceramics, lithics and small finds, ULAS offers:

- Assessment and analysis of small finds assemblages
- X-Radiography of finds
- Pottery reconstruction
- Archaeological illustration

## Conservation

In partnership with Dr Graham Morgan FIIC ACR our finds specialists offer a comprehensive conservation service including:

- Stabilisation
- Artefact cleaning
- On-site conservation of artefacts
- Investigative and remedial conservation
- Freeze drying of small artefacts
- Stabilisation of metal, glass and organic materials
- Identification of textile and wood

