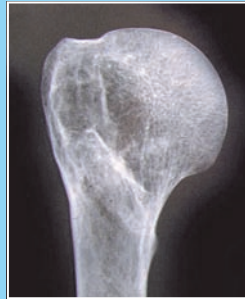


X Rays

We have our own in-house x-ray facilities and x-ray non adult dentition as standard. Dental x-rays are used to provide a highly accurate method of age estimation in the sub adult population.



We also take x-rays of pathological conditions to aid in diagnosis and interpretation.



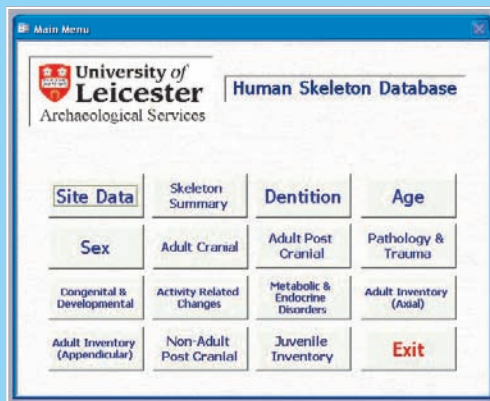
Human Osteological Consultancy, Assessment, Excavation and Analysis



Database

We have designed and implemented a fully functional skeletal database into which we input all data recorded during the analysis.

It is our eventual aim to build a fully networked database accessible to osteological researchers throughout the country.



For further details please contact:

Harriet Anne Jacklin (Project Osteologist)

Phone: (0116) 223 1323

Email: haj4@le.ac.uk

http://www.le.ac.uk/ulas/services/human_remains.html



 **University of
Leicester**

University Road, Leicester, LE1 7RH
Phone: (0116) 252 2848 Fax: (0116) 252 2614
Email: pnc3@le.ac.uk, rjb16@le.ac.uk
Website: www.le.ac.uk/ulas

WHAT ULAS CAN PROVIDE:



- ◆ **CONSULTANCY**
- ◆ **ASSESSMENT**
- ◆ **EXCAVATION**
- ◆ **ANALYSIS**



**University of
Leicester**

ABOUT US

Due to major redevelopment of the heart of Leicester, over the past three years ULAS has excavated over five cemetery sites including one of the largest medieval parish cemeteries within the East Midlands.

To enable our unit to deal with such an undertaking, ULAS has established its own Osteological Service. All team members have wide experience in both the excavation and subsequent analysis of human remains and lab-based analysis has been undertaken on more than 1600 skeletons.

We believe that archaeology and human osteology are closely interlinked and that to make the most of any data collected, close co-operation is essential.

To this end we provide a comprehensive service which understands the needs of commercial archaeological contractors, whilst maintaining the highest professional standards of archaeological and osteological practice.



Consultancy

We can provide osteological advice and consultancy at competitive rates.

Assessment

We can provide assessment reports on small to large skeletal assemblages.

Excavation

We can provide excavation services for human remains from all periods.



ULAS takes great care over the excavation of human remains. Each skeleton is carefully excavated by experienced staff and is recorded, planned and photographed on site to the highest professional standards.

Team members have experience in dealing with human remains from all periods.

All handling and treatment of human remains follows the strictest ethical guidelines.

We can tailor excavation procedures to take into account the needs of the site, research objectives, time constraints and budget, without compromising standards and the data collected.

We take great care in recording the burial environment and have experience in excavating and recording a variety of different burial traditions.



Analysis

We can provide comprehensive analysis of human remains using state of the art equipment.



Basic Analysis

Data on the age, sex, cranial metrics and cranial morphology, post-cranial metrics and non-metric traits, stature, dentition and dental health, pathology and trauma is recorded utilising a new fully standardised recording form created by the Project Osteologist.

The form adheres to Brickley & McKinley (2004) *Guidelines to the Standards for Recording Human Remains*. IFA Paper No 7. and Buikstra & Ubelaker (1994) *Standards for Data Collection from Human Skeletal Remains*. Arkansas Archaeological Survey Research Series No. 44.

Pathological Analysis



All skeletons are examined for any signs of:

Pathology and Trauma

Metabolic and Endocrine Disorders

Congenital and Developmental Variants

Activity Related Changes

