

School of Psychology



Undergraduate Courses



University of
Leicester



Contents

Welcome to Psychology	3
What has Leicester got for you?	4
Psychology Degrees offered	5
Why choose Psychology at Leicester?	6
First Year Psychology	7
Degree Options.....	8
<i>BSc Psychology</i>	8
<i>BSc Psychology with Sociology</i>	9
<i>BSc Psychology with Neuroscience</i>	10
<i>BSc Psychology with Biology</i>	10
<i>BA Combined Studies</i>	11
Teaching Methods	12
Teaching Facilities	14
Student Support	15
Research in the School of Psychology	16
Entrance Requirements	17
The University and City of Leicester.....	18

Welcome to Psychology

Psychology has been called the science of mind and behaviour: how and why we act, react and interact as we do. There has never been a more exciting time to study psychology with the development of computer-based imaging techniques. Such techniques allow us to peer into the brain complimenting more traditional experimental procedures for measuring and assessing the behaviour of others. The School of Psychology at the University of Leicester is a well-established School with a proven reputation for the quality of its undergraduate courses. We scored the maximum points in the last independent teaching quality assessment and the 2003 Times' survey of universities places us 16th out of 83 UK psychology departments. Whether you are studying psychology as a single subject degree or taking psychology jointly with biology, neuroscience or sociology, you can be sure that your course has been validated and approved by the British Psychological Society. All our degrees will provide you with the

necessary academic knowledge, both of psychological theory and practice, for your future career.

Psychology at Leicester is taught through lectures, seminars and discussion groups and practical projects carried out in the laboratory or the outside world. We have a large and well-equipped School, with a talented staff who have interests in both pure and applied aspects of psychology.

A degree in psychology from the University of Leicester could be the first step in a career in scientific research or for training in one of the applied fields of psychology, such as clinical, occupational or forensic psychology. Specialist post-graduate courses in all of these areas are available at the University of Leicester within the School of Psychology. Apart from specialist applications, many of our graduates choose to enter the graduate professions such as teaching, management or personnel work where a background of psychological knowledge provides an invaluable starting point.



Find out more by visiting the School at one of our Open Days or by contacting our web site at: www.le.ac.uk/psychology.

I hope you will choose to come and join us at Leicester to read psychology and look forward to welcoming you in the future.

Professor Graham Davies
Head, School of Psychology

What has Leicester got for You?

Leicester is a major cultural and commercial centre offering a wealth of facilities and attractions. It is a vibrant place with many exciting experiences in store. With a large student population you can be sure there is a busy social scene.

Leicester is a city of history and tradition. You can see the extensive remains of the Roman settlement at the Jewry Wall Museum or relive the Wars of the Roses at Bosworth Field.

The 21st Century is already taking shape in Leicester with the opening of the £46 million National Space Centre in the heart of the city. The friendly people of Leicester care about their city and it has become Britain's First Environment City because of numerous green initiatives. It is also a city that is passionate about its sporting achievements. With first class football, rugby and cricket you too could join with the winning spirit.



Degrees Offered

We provide an education in psychology that gives our students breadth of vision and specialised knowledge across the whole range of psychology.

All our degrees are 3 year full-time.

BSc Psychology

UCAS code: C800 BSc/Psy

BSc Psychology with Sociology

UCAS code: C8L3 BSc/PsySoc

BSc Psychology with Neuroscience

UCAS code: C8B1 BSc/PsyNs

BSc Psychology with Biology

UCAS code: C8C1 BSc/PB

BA Combined Studies

UCAS code: Y001 BA/CombA



What Our Students Say

“For me, choosing the right university is all about getting the right balance to suit your needs. I chose Leicester because of a number of reasons. Psychology has always been an area that has fascinated me, so when I decided to go for this degree, I naturally wanted to choose a University that would be able to provide a good level of teaching in psychology, needless to say Leicester is among some of the Universities in the country that has received awards for excellent teaching in this field. Geographically, Leicester is ideal as it is central and easily accessible from all areas of the country. The city is a good size and has a great choice of shops, pubs, bars and clubs. The

University has a healthy reputation and continues to perform well in all areas of academic achievement.”

“The campus is a great size as it doesn’t involve 1 mile treks to get to your next lecture, but at the same time is nicely spaced out. We have a union shop, student employment centre, student accommodation centre, travel agent, computer suites all over the campus, several cafes and diners as well as a sports hall. Leicester and Leicester University provides all the ingredients required for a healthy social life and a great degree qualification.”

Luke Pollock, Second Year student taking Psychology with Neuroscience



Why choose Psychology at Leicester?

International Students

We welcome overseas applicants, including Junior Year Abroad, for all our undergraduate degree courses. We accept many overseas qualifications as well as International or European Baccalaureate. We can also provide information regarding pre-undergraduate courses at the University leading to qualifications acceptable for entry to our undergraduate courses. Potential applicants who are interested in taking such a course, and/or those who are uncertain about the acceptability of their qualifications, are invited, in the first instance, to visit the School's website and select the International Students' page. The University's International Office website also provides much useful information:

<http://www.le.ac.uk/international/>



- *Excellent teaching that is second to none, gaining a maximum 24 out of 24 in the last subject review*
- *Excellent research of international reputation*
- *Ranked overall 16th Psychology Department in the UK by the Times newspaper (May 2003)*
- *Range of different degrees and flexible courses allowing you to follow your own interests*
- *Enthusiastic, research active and helpful staff*
- *Teaching underpinned by the research of the academic staff*
- *Excellent welfare provision*
- *Guaranteed place in University accommodation for new students*



All Psychology Degrees – First Year



There are five variations in psychology available at degree level at the University of Leicester. In the first year all students in one third of their modules take the same modules that cover the breadth of modern psychology. Students studying single subject psychology take their remaining two-thirds of modules in psychology, whilst Psychology with Sociology and Psychology with Biology take a further third of their modules in psychology and the rest of their modules with their second subject (e.g. sociology for those taking Psychology with Sociology). Those taking the Psychology with Neuroscience degree will take slightly more than a third of their modules in neuroscience in their first year. Those in BA Combined Studies take one third of their modules in psychology in their first year along with two other subjects for the rest of their modules (see Combined Studies brochure for subject combinations).

The first year develops your understanding of psychology by introducing major approaches to psychology including cognitive psychology, visual and auditory perception, social psychology, biological psychology, applied psychology, and developmental psychology. Throughout the first year, you will gain practical experience in the laboratory classes which will serve to develop this knowledge. You are taught how to handle and analyse data using computers.

Practical classes and discussion groups have components designed to develop IT, numeracy skills, writing and other communication skills. You are encouraged to develop your presentation and team-working skills in small group settings.

The British Psychological Society, based in Leicester, is the professional body that scrutinises the standard of all degrees in Great Britain and Northern Ireland. The Graduate Basis for Registration (or GBR) is an important benchmark of achievement for all degrees in Psychology. In order to qualify all undergraduate degrees in Psychology must have at least 50% of the modules in Psychology. A first degree with GBR is the normal requirement for entry into professional training, for example, as a clinical, educational or occupational psychologist. All our honours degrees offer the opportunity to obtain GBR on successful completion.

Degree Options

Psychology BSc

UCAS Code: C800 BSc/Psy

3 years full-time

By the end of your first year you will have a firm grounding in both basic and applied psychology and will have also gained practical research experience, including the use of computers for data collection and analysis. In the second year you will build upon this grounding with more in-depth modules in social behaviour and development, abnormal psychology and individual differences, biological psychology and cognitive psychology, as well as further practical experience designed to foster the independent research skills required for completion of your empirical dissertation in the third year.

The final year comprises the study of core modules in social behaviour and development and brain and cognition and four option modules, which you can select from an available range according to your specialist interests. The range of options available varies from year to year but would typically include: psychology and music, psychology of sport, behavioural pharmacology, cognitive and clinical neuropsychology, psychology of love and attraction, economic psychology, game theory, and some aspects of applied psychology (e.g. clinical, legal, educational). In

addition in your final year you will conduct a major piece of individually conceived project, and also have the opportunity to participate in professional research being currently undertaken by members of staff.



BSc Psychology with Sociology

UCAS code: C8L3 BSc/PsySoc

3 years full-time

By the end of your first year, you will have completed two-thirds of your degree in psychology, and the remaining third in sociology. The second year will also follow this pattern, ensuring that you cover core material in both subjects.

In the final year, you will take core psychology courses in social behaviour and development and brain and cognition. In addition, you will take two option modules in psychology, and two options in sociology, chosen to suit your particular academic or vocational interests. The range of options available in psychology typically includes: psychology and music, psychology of sport, behavioural pharmacology, cognitive and clinical neuropsychology, psychology of love and attraction, economic psychology, game theory, and some aspects of applied psychology (e.g. clinical, legal, educational). Sociology options typically include topics such as class, health, work, education, gender, ethnicity, the city and popular culture. In addition, a research project in psychology is undertaken by all students.

“I was looking for a University large enough to have a great student union and city with attractions but small enough so that I wouldn’t feel lost and lonely. Leicester provided a happy balance by being near to a buzzing city and only a matter of a few miles away from the countryside. It also has an excellent reputation for Psychology, which is important as I intend to continue in this field after graduation. A good undergraduate degree with BPS recognition was essential, and Leicester provided that.

Now I’m about to leave Leicester I can honestly say I would do it all again and not change any part of my experience. The staff and students are friendly and helpful, just what you need in a new place.”

Zoe Okonta, Third Year Single Subject Psychology Undergraduate

“The undergraduate course at the University of Leicester has provided me with a broad knowledge of Psychology and the enthusiasm to further my studies. The teaching staff are approachable and willing to help with any problems. Within the department the computing facilities are excellent.”

Claire Wilson, Third Year Single Subject Psychology Undergraduate



Degree Options (continued)

BSc Psychology with Neuroscience

UCAS Code: C8B1 BSc/PsyNs

BSc Psychology with Biology

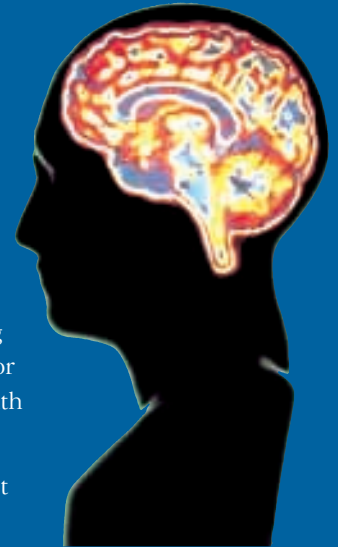
UCAS Code: C8C1 BSc/PB

3 years full-time

These two courses aim to provide the student with an understanding of mechanisms of brain function underlying psychological principles (Psychology with Neuroscience), or the relationship of psychology with biology (Psychology with Biology).

As with other students in the School of Psychology, the first year for students on both courses comprises two-thirds psychology (or almost two thirds for those taking Psychology with Neuroscience), with the remaining one third made up of modules covering fundamentals of biology and chemistry. In the second and third years, you will again do two-thirds psychology, in which you will study social psychology, developmental psychology, personality and individual differences, cognitive psychology and biological psychology. You will also develop practical experience of data collection and statistical analysis in psychological experiments, including a 10-week research project (third year).

The remaining one third is made up of biology modules looking at functions of brain systems, chemical and electrical functioning of neurones and drug actions on the nervous system (Psychology with Neuroscience), or various aspects of biology, including evolution of human and animal behaviour, plant and cell biology, and population ecology (Psychology with Biology). In both courses there is a strong element of choice in the third year, and students will have an opportunity, through the choice of options in psychology and/or biology, to introduce some variation into their courses of study that reflect their own interests and career aspirations.



BA Combined Studies (Psychology)

UCAS Code: Y001 BA/CombA

3 years full-time

By the end of your first year you will have completed one third of your year in psychology and two thirds from other subjects of your choice. In the second year you will study psychology for two-thirds of the modules to ensure that you are eligible for the Graduate Basis for Registration (GBR) of the British Psychological Society. (Please note that Combined Studies students starting their first year in autumn 2005 will no longer be eligible for GBR, whether or not two-thirds of modules are taken in psychology. Furthermore, they will not be able to transfer to single subject or joint degrees in Psychology at the end of their first year). If you choose to do this you will take the remaining third of your modules with your other 3-year subject. Students not seeking the Graduate Basis for Registration will take psychology along with other 2- and 3-year subjects. The second year core modules in psychology cover the biological basis of behaviour, cognitive psychology, developmental psychology, abnormal psychology and individual differences, and social psychology.

In your third year you will take core modules in social behaviour and development and brain and cognition. You will also have a choice of options to suit your own academic or vocational interests: these typically include psychology of music, psychology of sport, behavioural pharmacology, psychology of love and attraction, cognitive and clinical neuropsychology, economic psychology, game theory, and some aspects of applied psychology (for example, clinical, educational, and legal psychology). All students undertake a research project. For those on the GBR route, in total two-thirds of your modules credits will be in psychology and the rest will be taken in your other subject(s).

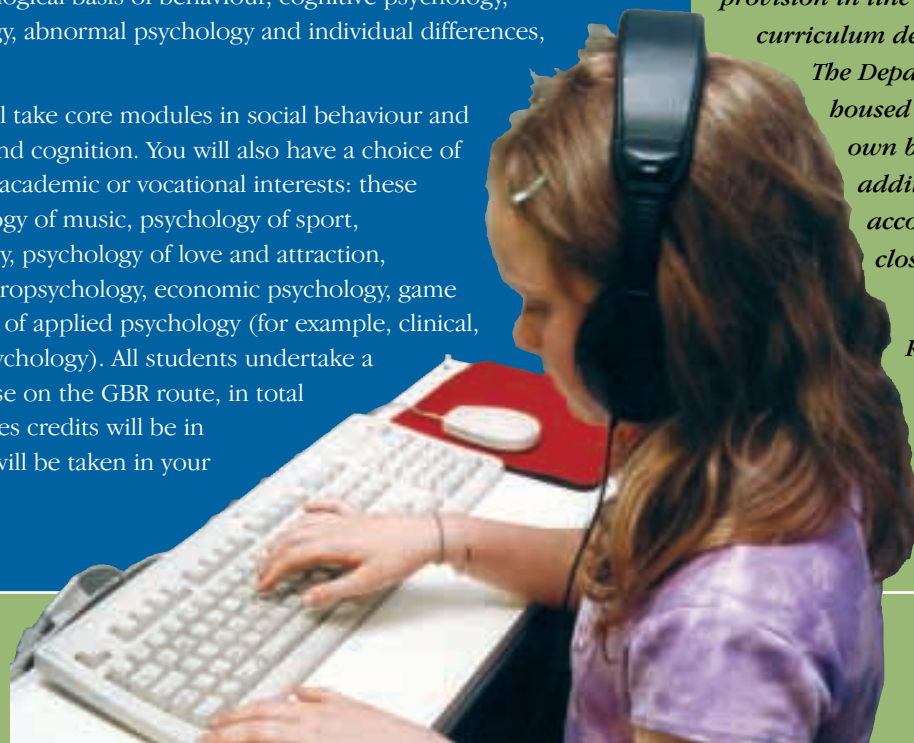
“Undergraduate programmes provide considerable breadth of coverage of the psychology discipline. The BSc programmes are identical in the structure of core courses in the first two years.”

“The Department has a good range of specialised research equipment, which is extensively used by students in practical, project and dissertation work.”

“Extensive and appropriate learning resources are provided at both departmental and university level. These are well planned and carefully managed, with the aim of developing and upgrading provision in line with curriculum developments.

The Department is housed mainly in its own building, with additional accommodation close by.”

(QAA Subject Review Report of Psychology at the University of Leicester)



Teaching Methods

Assessment

This is based on the following:

- There are two semesters in each year and the examinations are at the end of the semester in which the module is taught for years 1 and 2. Examinations are at the end of the second semester in the final year.
- Course work: Practical modules involve writing up of laboratory reports. Some modules have no course work element; others have tutorial essays, short reports or small group presentations.
- Joint degrees and Combined Studies have a final year project in the first semester, which is submitted as a long report followed by an oral presentation within the group that you worked with. Final year students studying single subject psychology write up a dissertation in their first and second semesters.



All of our courses are modular

The academic year is divided into two semesters. One of the benefits of the modular system is that your overall performance is fed back to you at the end of each semester in Years 1 and 2. This enables you to monitor your progress and, if necessary, adjust your work pattern.

Each module has a credit rating (10 or 20). The credit rating is an indication of the workload required for the module. Each year you must complete 120 credits in order to progress to the next year.

Lectures

Lectures form a vital part of university teaching. They are used to define the basic material for a given module. Lecture styles vary considerably and may include demonstrations as well as the traditional lecture format.

Tutorials

In a tutorial a small group of students meet with a member of staff for an hour. For tutorials students may be required to research a particular topic and discuss their findings with other members of their tutorial group.





Teaching Facilities

Laboratory classes

Half the modules in the first and second years that are common to all the degree courses involve laboratory work. During your undergraduate career you will acquire a full range of personal transferable practical, IT, team work and presentation skills.

IT provision

The University's Computer Centre provides a networked microcomputer service to students, supplemented by Faculty PC sites, offering applications software, e-mail and access to the Internet and the University Campus Wide Information Service (CWIS). Student-access computer suites, operating on the Windows 2000 system, are used for formal teaching sessions and are available to students for individual work. You will have access to your own computer file store, with common user interface, application software etc., from any of the 18 Open Access Areas on and off campus. In addition there are three computer labs in the Astley Clarke building which are solely for the use of psychology students.

Library

The main Library on Campus has an excellent stock of up to date books and is well stocked with periodical titles in psychology. Additional copies of texts in demand for taught courses together with research articles are placed in the short loan collection. CWIS provides electronic access to the Library catalogue, online journals and a range of information retrieval systems including PsyInfo.



Student Support

Personal Tutor

All students are allocated a Personal Tutor who is a member of staff in Psychology. You will normally see your personal tutor two or three times a term to discuss progress in your studies, and of course at any other time if you need advice. Your tutor will provide a sympathetic ear for all matters of personal concern, whether they be academic, financial, housing, career, social or personal problems.

Welfare Services

The University has a professional Welfare Service and the staff are available to assist with a wide range of issues from managing your money to dealing with landlords etc. These will, of course, be treated in the strictest confidence.

Student Learning Centre

Support for the development of students' independent learning skills is provided by this Centre. You can make use of a year round programme of study workshops, a drop-in advisory centre and a wide range of written study guides.

Careers Service

Careers staff provide guidance starting in year 1 to all undergraduates on the importance of skills development, work experience and career planning. They offer drop-in careers advice, a well-stocked information room, workshops and practice interviews.

Student Health Centre

This provides full NHS Practice and a student sick bay.



Research in the School of Psychology

All of the academic staff in the School of Psychology are enthusiastic psychologists engaged in active research programmes and teaching in their subject. This has a direct impact on the teaching programme, not only because you are being taught by experts in their field, but also because it affects your final year project.

The School has consistently attracted financial support for its research activities from the major UK research councils, from industry and from charities.

The School has a full postgraduate training programme leading to the degree of PhD and postgraduate courses – Doctor of Clinical Psychology (3 years full time) and MSc courses in Forensic Psychology (1 year full time), Forensic and Legal Psychology, Applied Forensic Psychology, Occupational Psychology, and Psychology of Work (the last four courses are all 2 years by distance learning).

Some highlights of the wide range of current research activities include:

- On hold phone music has been found to keep people waiting longer than conventional verbal messages.
- Work in supermarkets suggests that the type of background music in a supermarket can influence the type of wine that is bought.
- A typology of stalkers developed within the school is currently in use by the San Diego police department in their case management.
- A government-funded child witness program within the school is looking at children's evidence and how it can be relayed by CCTV in court.
- Research has been undertaken into the differences between males and females in the way they communicate using technology.
- Computer-generated virtual environments have been found to promote spatial learning in physically disabled children.
- Following media celebrities can have both positive and negative psychological consequences for the individual.
- Maternal age at childbirth is being examined in relation to the effects on both mothers and children – findings indicate some positive outcomes for children of older mothers.
- Consumers who buy on an emotional basis tend to value their purchases more than those whose think deeply about what they buy.
- Individuals with diabetes who experience visual loss are more likely to have difficulties with daily living activities than those who lose their vision from other causes.
- Engaging in frequent and regular prayer can have beneficial health effects for religious persons.
- Current research is looking at improving the effectiveness of warning signs on consumer products.
- The work of a criminal profiler in our School has featured prominently in a popular Channel 4 series.

Entrance Requirements

All Psychology degrees

A/AS Levels: Normally applicants should have three A Levels although two AS Levels will be considered in place of one A Level. General Studies accepted.

Key skills: Key Skills may be included in offer (where taken) in addition to the three A Levels, either as the Key Skills qualification or the individual key skill units.

GCSE: English Language (or equivalent), Mathematics or Statistics and Biology or dual award Science normally required.

Other Qualifications: International or European Baccalaureate, OU, National Certificate/Diploma and overseas qualifications welcomed. Mature students welcomed: alternative qualifications, for example kite-marked Access courses, considered. Direct entry into second year with advanced qualifications strictly equivalent to our first year may be possible.

Typical offers

A/AS Levels:

C800 Psychology BSc: 300 – 320 points from 6 or 12 unit awards. ABB-BBB at GCE A Level preferred.

C8B1 Psychology with Neuroscience and C8C1 Psychology with Biology: 280 – 300 points from 6 or 12 unit awards. BBB-BBC at GCE A Level preferred, Biology GCE A Level required.

C8L3 Psychology with Sociology: 280-300 points from 6 or 12 unit awards. BBB-BBC at GCE A Level preferred.

See our web site for typical offers for other qualifications.

Combined Studies BA

A/AS Levels: 260 points from 6 or 12 unit awards. BCC at GCE A Level preferred.

GCSEs: Mathematics or Statistics plus Biology or Dual Award Science and English Language.

See our web site for typical offers for other qualifications.

For further information

For course enquiries

Tel: +44 (0)116 252 3371

Fax: +44 (0)116 252 2067

E-mail: psych-admissions@le.ac.uk

Website:

<http://www.le.ac.uk/psychology>

The University and City of Leicester



The University

The University of Leicester is one of the group of older universities in the country. Founded in 1921 as a university college, it has grown from humble beginnings into a major institution. There are now more than 18,500 registered students in over 40 departments spread across 6 faculties, Science, Medicine and Biological Sciences, Arts, Law, Social Science and Education.

Accommodation

The University possesses an outstanding array of accommodation. Most of the traditional halls of residence are located in the leafy suburb of Oadby. Built in the extensive grounds of Edwardian houses, these combine modern purpose-built rooms within a magnificent setting. We provide 14 meals a week. Much of hall social life revolves around the Junior Common Room bar and adjacent recreation rooms, which are located mostly within the main houses. If you prefer to cook for yourself, we also have self-catering accommodation, much of it very close to the main campus.

Sport

A vast range of sporting activities are catered for, from traditional competitive sports such as football, rugby, and squash, through to other pursuits such as mountaineering, pot-holing, and sub-aqua diving. Facilities include two sports halls, squash courts, two fitness centres, a running track, floodlit all-weather pitches, cricket squares, and many football and rugby pitches.



Life in Leicester

Leicester is one of England's largest provincial cities, with a population of nearly 300,000. We are a cosmopolitan city and our many cultures are reflected in our restaurants, clubs, shops and festivals such as the Caribbean Carnival – Britain's biggest outside London – Chinese New Year and the Diwali Festival of Light. Steeped in history dating back to Roman times, it is now regarded as one of the most prosperous cities in Europe and enjoys a broad based economy.

Leicester is situated in the centre of England and is well-connected to the rest of the country by inter-city rail links (London is just over an hour away) and the motorway network.

Not without justification, the media now refers to Leicester as Britain's sporting capital, with top-class rugby – Leicester Tigers are one of the leading professional rugby clubs in Europe – and basketball in the form of the Leicester Riders. Leicester is also home to Leicester City Football Club and Leicestershire County Cricket Club – the rugby, football and cricket grounds are all within a short distance of the University.

Social life

You won't be bored in Leicester. Theatres, multiplex cinemas, several museums, a huge range of restaurants, bowling alleys, LaserQuest and many other activities are available. The city centre has recently seen an explosion in pubs, wine bars and nightclubs and there are numerous venues for a fabulous night out. Leicester is particularly well-served for live music with a number of venues, both large and small, offering music to suit all tastes, for example, classical and folk at De Montfort Hall, jazz and world-music at the Y Theatre, and new bands at the Charlotte, which has been host to Oasis, Blur and the Cranberries amongst others.



We have made every effort to check the accuracy of the information in this leaflet.

However, changes and developments happen from time to time and alterations may occur to the courses and services described in this leaflet.

© University of Leicester 2003



University of
Leicester

School of Psychology • University of Leicester
Leicester LE1 7RH United Kingdom

Telephone: +44 (0)116 252 3371

Fax: +44 (0)116 252 2067

E-mail: psych-admissions@le.ac.uk

Website: <http://www.le.ac.uk/psychology>