

Illustrations in the Architectural Press of Victorian and Edwardian Buildings in Leicestershire

by *J.D. Bennett*

INTRODUCTION

In the following pages are listed most of the Leicestershire buildings illustrated in four of the main architectural periodicals of the 19th and early 20th centuries — the *Builder*, *Building News*, the *Architect* and the *Builders' Journal*. The omissions consist chiefly of buildings which it was not possible to identify, together with one or two which were never actually built.

Of the four periodicals, the *Builder* is the oldest; it started in 1842 and changed its name to *Building* in 1966. *Building News* began publication in 1855, and in 1926 merged with another journal, the *Architect*, founded in 1869, to form *Architect and Building News*; in 1971 this reverted to the title of the *Architect*.* The *Builders' Journal* was established in 1895, and after several minor changes of title became the *Architects' & Builders' Journal* in 1910; it took its present name of the *Architects' Journal* in 1919.

The earliest Leicestershire building that I have been able to find illustrated is the entrance lodge of the now-demolished Wyggeston's Hospital on Fosse Road, designed by T.C. Sorby of London, which appeared in the *Building News* in April 1866. The lack of anything prior to this date can only be attributed to the fact that relatively little likely to attract the attention of the technical press was being built locally in the 1840s and 1850s; all the same one might have expected to see Joseph Hansom's Baptist Chapel (1845) or Gilbert Scott's St John's Church (1855), or even James Medland's Temperance Hall (1853).

Approximately four-fifths of the buildings in this list are by local architects. In *Leicester Past and Present* (vol. 2) Jack Simmons points out that only three major public buildings erected in Leicester during the period 1860-1914 were by non-local men — Wyggeston's Hospital (T.C. Sorby), the Town Hall (F.J. Hames, who was Leicester-born) and the Midland Station (C. Trubshaw) — so successful was the Leicester Society of Architects in excluding outsiders from local architectural competitions.

Looking through this list of illustrations, it is interesting to see which buildings are missing. There is, for instance, no sign of Joseph Goddard's Midland Bank (1870), Ernest Gimson's White House (1897), Walter Brand's Wholesale Market (1902) or Arthur Wakerley's Singer Building (1904).

On the other hand, many buildings which we rate highly today *are* there — Isaac Barradale's The Hawthorns (1875), Edward Burgess's Victoria Coffee House (1888), Goddard, Paget & Goddard's Sun Alliance Offices (1891) and Everard & Pick's National Westminster Bank (1901), to name but four.

The entries are arranged by place, and in the case of Leicester by street. Where a building is illustrated in more than one journal, I have given both references, even though in some cases the illustrations are identical; when this is so, I have marked the references with an asterisk. I have indicated if the illustration includes a plan, and where appropriate have included brief notes about the fate or present condition of the buildings illustrated.

* ceased publication 1980.

ABBREVIATIONS

- A *Architect* (1869-1914)
 B *Builder* (1842-1914)
 BJ *Builders' Journal* (1895-1914)
 BN *Building News* (1857-1914)
 * identical illustrations

ASHBY FOLVILLE

1. Manor House: entrance *John Ely*
 B. 12 August 1893, p.122 (with plan)
 The house was largely rebuilt for H.H. Smith-Carrington in 1891-3.

BAGWORTH

2. Maynard Arms Inn *Everard & Pick*
 B. 16 April 1904, pp.413, 415 (with plan)

BIRSTALL

3. The Holt *Joseph Goddard*
 BN. 13 March 1874, pp.294-5 (with plan)
 Built 1872 for W.H. Walker, a boot and shoe manufacturer; a children's home since c.1930.

BURROUGH ON THE HILL

4. Burrough Court *W.H. Brierley*
 BJ. 16 May 1906, p.263*
 B. 6 April 1907, p.426 (with plan)*
 Built for H.C. Allfrey; burnt down during World War Two and now demolished.

COLD OVERTON

5. The Hall: a new front to the east side
Lanchester & Rickards
 B. 8 May 1914, p.561
 Built for James Montague and since removed.

LEICESTER

6. Abbey Park: lodges and pavilion
James Tait
 BN. 2 June 1882, p.666
 The pavilion was destroyed by fire in the early 1960s.
7. Adelaide Buildings, 40-46 Belvoir Street *James Tait*
 B. 5 June 1897, p.504
 Built as a warehouse for Barrow Bros., leather factors, and dated 1887.
8. Shop, 57 Belvoir Street *R.J. & J. Goodacre*
 B. 5 June 1897, p.503
 Built for the Worcestershire Furnishing Co, and later demolished for the extension of Joseph Johnson's premises.

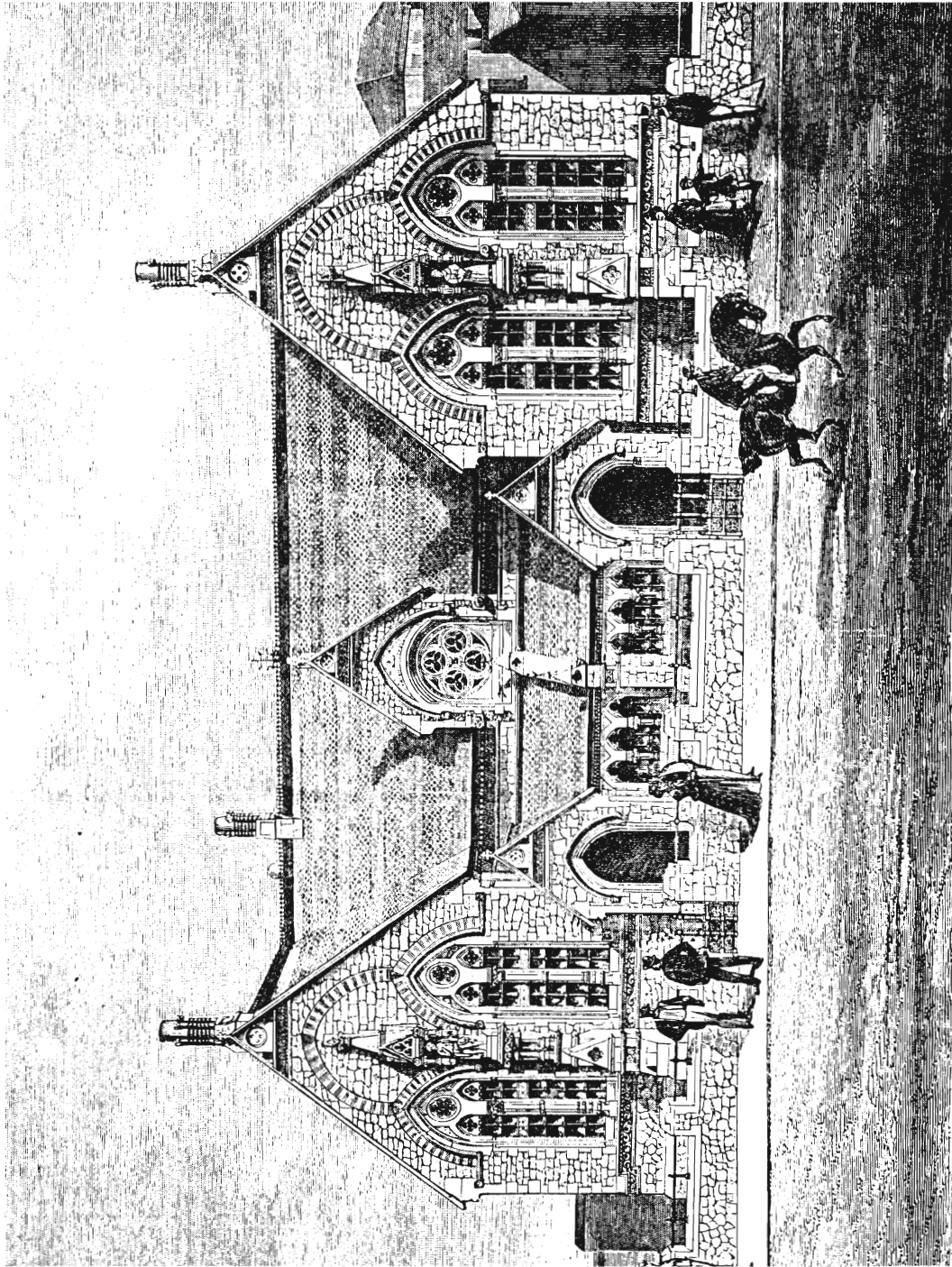


Fig. 1 St. Mary's Schools, Leicester (*Builder*, 23 October, 1869)

9. General News Room, Belvoir Street *Goddard, Paget & Goddard*
A. 20 December 1901, p.392
Dated 1898; now Yorkshire Bank

10. Liberal Club, Bishop Street *Edward Burgess*
B. 5 June 1897, p.511
Built 1886; closed 1936.

11. Atlas Works, 11 Campbell Street *Isaac Barradale*
B. 5 June 1897, p.504
Built for William Vincent, a hat manufacturer; now demolished.

12. Warehouse and shops, 44-48 Cank Street *G. Lawton Brown*
BN. 4 November 1904, p.645
Built for J.D. Paul, an ironmonger, and dated 1904; now a bookshop and art gallery.

13. St. Mary's Parish Schools, Castle Street *Joseph Goddard*
B. 23 October 1869, pp.846-7 (with plan)
Demolished 1964.

14. St. Cuthberts, 16 Clarendon Park Road *G. Lawton Brown*
BN. 19 July 1901, p.72
Built for B.S. Baldwin, a stock-broker, and dated 1901; now somewhat altered.

15. East Gates Coffee House, East Gates *Edward Burgess*
B. 5 June 1897, p.511
Built 1885; closed c.1921, and now a branch of a multiple tailors.

16. Wyggeston's Hospital, Fosse Road: entrance lodge *T.C. Sorby*
BN. 6 April 1866, p.221 (with plan)
Demolished 1967.

17. Two houses, 22-24 Fosse Road South *Everard & Pick*
B. 16 April 1904, pp.414-5 (with plan)
Built for Henry Flude, and dated 1897.

18. Thomas Cook's offices, 5 Gallowtree Gate *Goddard, Paget & Goddard*
A. 9 August 1895, p.88
No longer occupied by Thomas Cook Ltd.

19. Victoria Coffee House, Granby Street *Edward Burgess*
B. 5 June 1897, p.510
Built 1888; closed c.1905 and now a shoe-shop, restaurant and school of dancing.

20. De Montfort Hall, Granville Road *Stockdale Harrison & Sons*
B. 30 June 1911, p.817 (with plan)

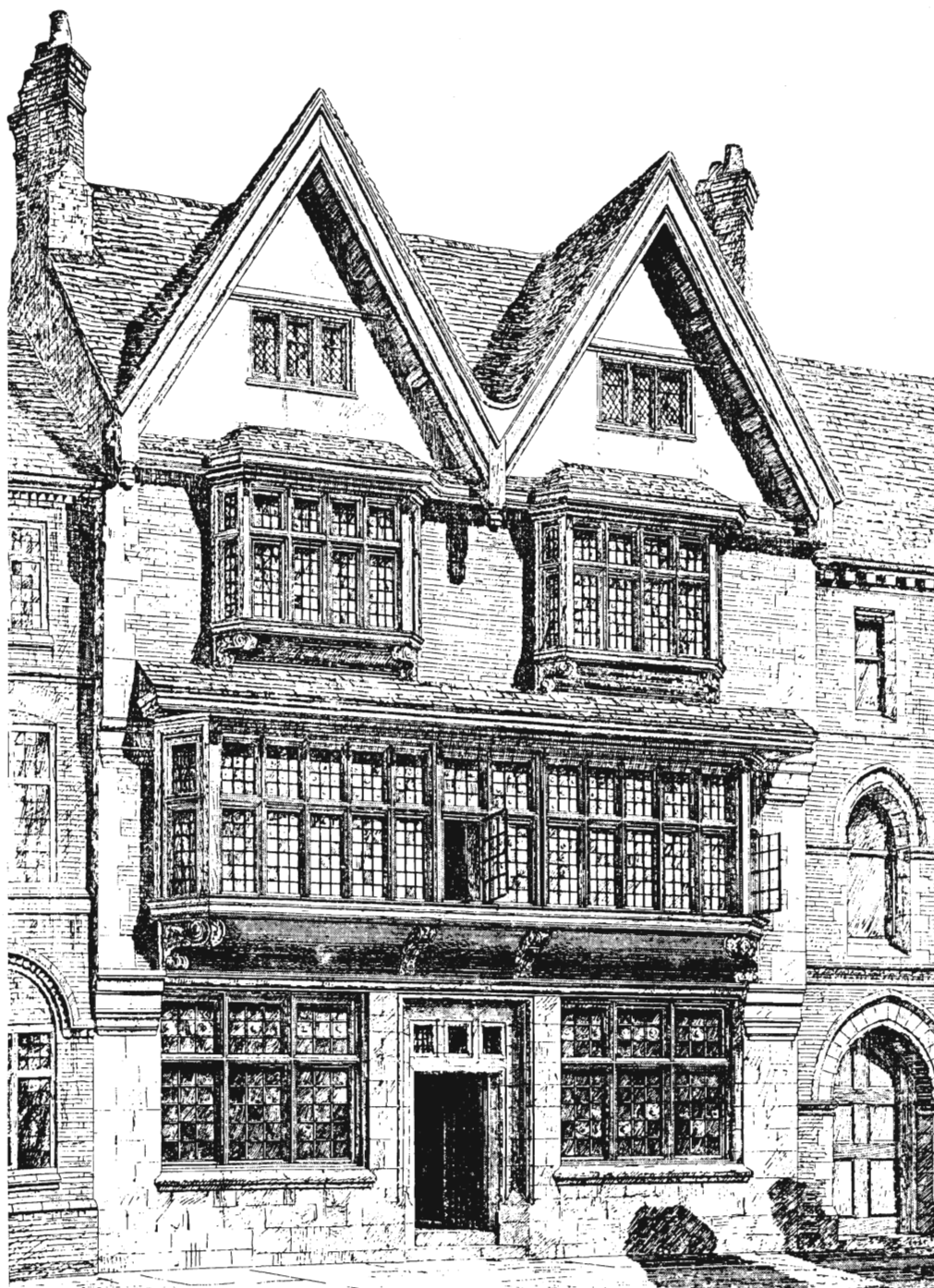


Fig. 2 St George's Chambers, Leicester (*Building News*, 13 September, 1878)

21. St. George's Chambers, 3 Grey Friars *Isaac Barradale*
BN. 13 September 1878, p.276
Built as offices for professional men, including Barradale himself.
22. Leicester Isolation Hospital, Groby Road *Blackwell & Thomson*
A. 20 February 1903, p.128
23. Clock Tower, Haymarket *Joseph Goddard*
B. 2 January 1869, p.10
24. Shop and offices, 7-9 High Street *G. Lawton Brown*
BN. 15 January 1904, p.92
Built for W.A. Gilbey, wine merchants, and now part of a bookshop.
25. Leicester Co-operative Society Stores, High Street *Thomas Hind*
BN. 12 December 1884, p.944
26. Sun Alliance Assurance Offices, Horsefair Street *Goddard, Paget & Goddard*
A. 23 October 1891, p.255
B. 5 June 1897, p.511
Rebuilt behind the facade 1979.
27. Royal Hotel, Horsefair Street: additions *Everard & Pick*
B 5 June 1897, p.501
Carried out 1895; rebuilt behind the façade 1978, when the site was redeveloped.
28. Morgan & Squire Ltd., Hotel Street: extension *Everard, Son & Pick*
BJ. 28 December 1910, p.669
Built at a cost of £14,000; now Rackhams Ltd.
29. Saracen's Head, Hotel Street *Stockdale Harrison*
BN. 19 July 1901, p.72
30. Shoe factory, 95 Humberstone Gate *Arthur Wakerley*
B. 5 June 1897, p.511
Dated 1881; now partly used as a restaurant
31. W.A. Lea & Son, Humberstone Gate: extension *Everard, Son & Pick*
BJ. 3 April 1912, p.359
Lea's drapery business was established in 1876; the shop, rebuilt in 1890, was extended in 1910, 1934 and 1955; it closed and was demolished in 1970.
32. Wyggeston's Girls' School, Humberstone Gate *Edward Burgess*
B. 18 June 1881, pp.767, 769 (with plan)
B. 5 June 1897, p.511
Built 1877; later occupied by City Boys' School and Charles Keene College, and now Age Concern.

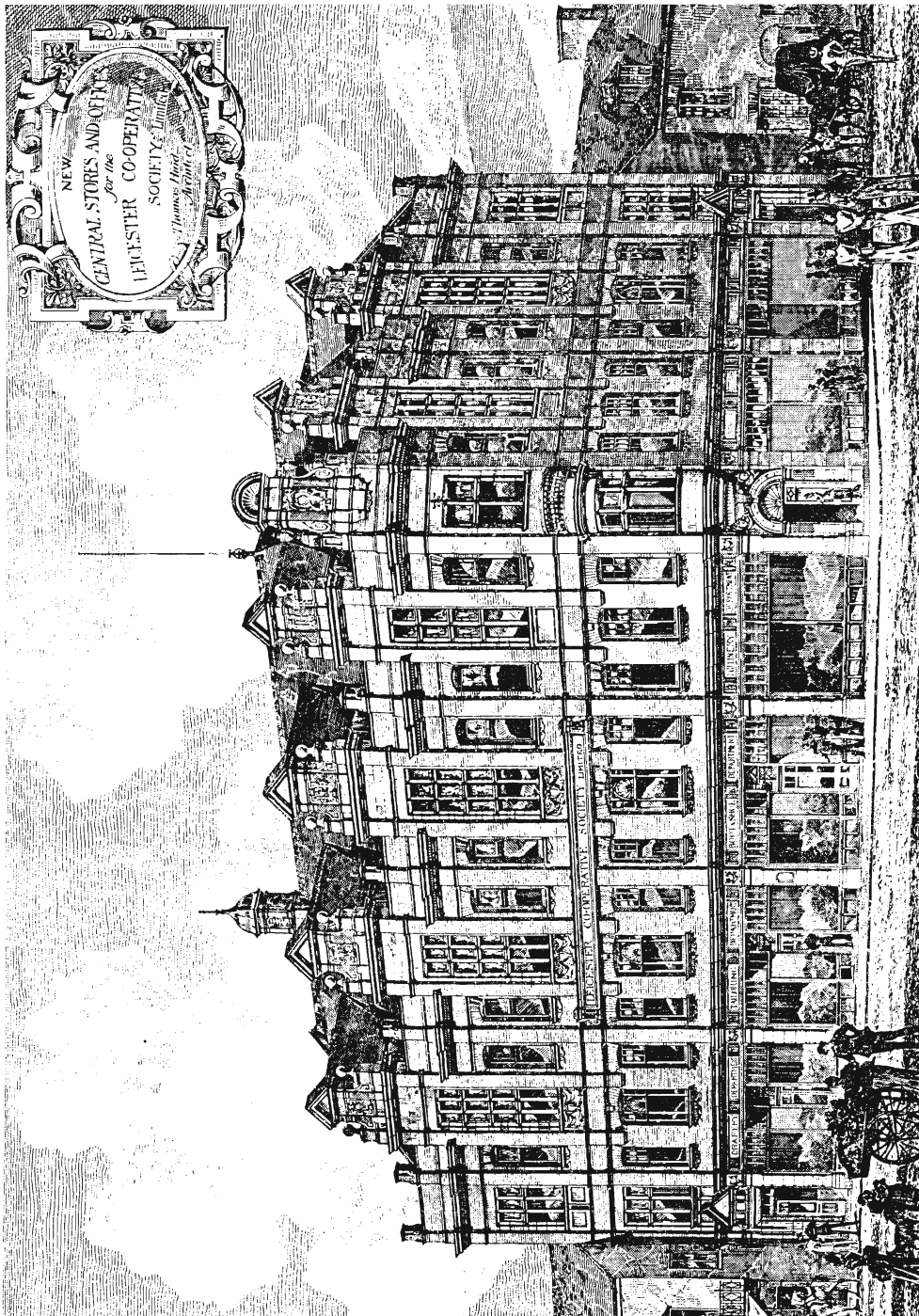


Fig. 3 Leicester Co-operative Society Stores, Leicester (*Building News*, 12 December, 1884)

33. Rutland Coffee House, Humberstone Road *Edward Burgess*
 B. 5 June 1897, p.511
 Built 1883 and closed c.1922; demolished 1972.
34. Wesleyan Chapel, King Richard's Road *Redfern & Sawday*
 BN. 19 March 1880, p.340 (with plan)
35. Houses at Knighton *Isaac Barradale*
 B. 1 Feb. 1890, p.81 (with plan)
 Probably 84-86 Knighton Road.
36. The Hawthorns, Knighton Park Road *Isaac Barradale*
 BN. November 1882, p.600
 Built 1875 for Wilmot Pilsbury, first head of the Leicester School of Art.
37. The Lawn, Knighton Park Road *Isaac Barradale*
 BN. 24 September 1880, p.354
 Built for Charles Brown; demolished.
38. House, 39 London Road *Edward Burgess*
 A. 13 September 1889, p.149
 Built c.1888, probably for G.C. Franklin, a surgeon; an extension built on the front.
39. Wyvern Hotel, London Road *Arthur Wakerley*
 B. 5 June 1897, p.511
 Built as a temperance hotel 1895, and closed c.1933; demolished 1974.
40. House, London Road *Tait & Langham*
 BN. 28 June 1878, p.648 (with plan)
 Built for William Stanyon, a boot and shoe manufacturer and temperance supporter; demolished, but probably on the site of No.188.
41. Brookfield, 266 London Road: additions, including stables, lodges and conservatory *Goddard & Paget*
 A. 21 June 1879, p.369
 Carried out for T. Fielding Johnson, a worsted spinner; later the Bishop of Leicester's house, and now the Charles Frears School of Nursing.
42. Clarendon Park Congregational Church, London Road *James Tait*
 A. 12 March 1886, p.157
 B. 5 June 1897, p.511
43. Woodbank, 326 London Road *Tait & Langham*
 A. 18 May 1878, p.298
 Built for T.H. Downing, a hosiery manufacturer; now demolished.

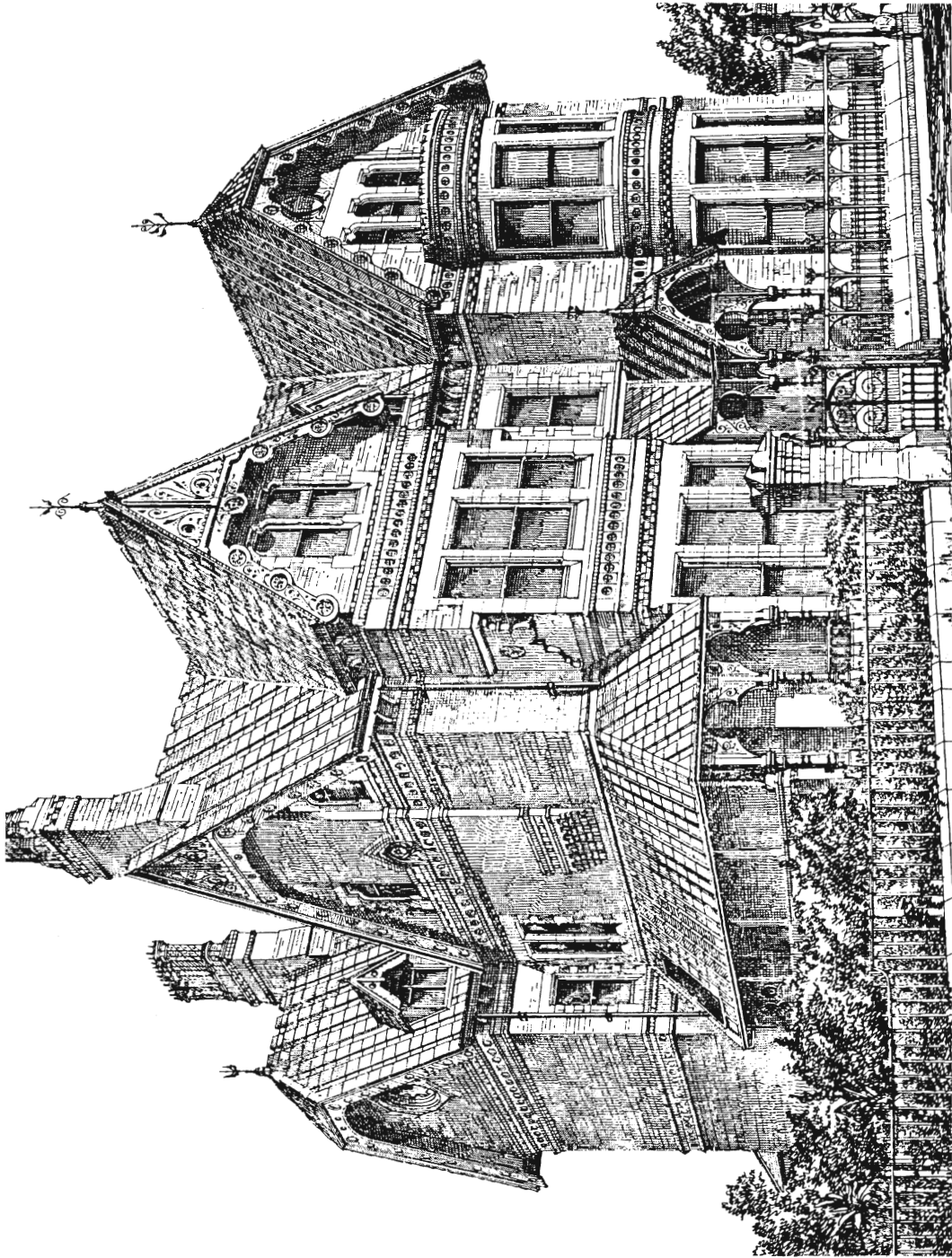


Fig. 4 Tintern House, Leicester (*Architect*, 10 August 1872)

44. Elmsleigh, London Road *Picton, Chambers & Bradley*
 B. 14 February 1874, p.132 (with plan)
 Built for John Stafford, a provisions merchant and cigar manufacturer, and now demolished.
45. Joseph Johnson Ltd., Market Street *Isaac Barradale*
 B. 5 June 1897, p.502
 Built 1880-83; the firm was founded in 1873, and is now Fenwick's Ltd.
46. Robert Hall Memorial Chapel, Narborough Road *Walter Brand*
 B. 11 April 1903, p.391 (with plan)
 Built 1901.
47. Unitarian Church, Narborough Road *Charles Kempson*
 BN. 25 April 1902, p.593
48. Technical Schools, The Newarke *Everard & Pick*
 BN. 29 May 1896, p.784*
 B. 5 June 1897, p.500*
 Now part of Leicester Polytechnic.
49. Art Gallery, New Walk: extension *Albert Herbert*
 B. 11 April 1913, pp.428-9, 431 (with plan)
 The Museum was founded in 1849, in what had been the Proprietary School; the Art Gallery was added in 1876, and extended in 1891 and 1911.
50. Constitutional Club, Pocklington's Walk *Frank Seale*
 BN. 29 December 1893, p.858 (with plan)
 Closed c.1973.
51. Knighton Spinneys, 14 Ratcliffe Road *Goddard, Paget & Goddard*
 A. 17 September 1886, p.167
 B. 5 June 1897, p.511
 Built for Joseph Goddard himself, and now a guest-house.
52. Tintern House, 112 Regent Road *Joseph Goddard*
 A. 10 August 1872, p.76 (with plan)
 Built for Henry Hughes, owner of the Falcon Engineering Works, Loughborough and dated 1871; now St. John Ambulance HQ for Leicestershire and Rutland.
53. Faire Bros. Ltd., Rutland Street *Edward Burgess*
 A. 28 February 1902, p.144*
 BN. 26 December 1902, p.902*
 Built 1898 as a warehouse for bootlaces.
54. Cottages, St. Barnabas Estate *Isaac Barradale*
 B. 8 December 1888, p.415 (with plan)
 Built for J.H. Cooper, a hosiery manufacturer, 'for the accommodation of workmen', in what is now French Road.

55. Pares' Bank, St. Martin's *Everard & Pick*
 B. 21 September 1901, p.252 (with plan)
 A. 2 September 1904, p.152
 Subsequently Parr's Bank, then Westminster Bank, and now National Westminster Bank.
56. Offices, 3 St. Martin's East *Everard & Pick*
 B. 16 April 1904, p.415
 An 18th century house, altered in 1903 for a firm of solicitors called Harris.
57. Melbourne Hall, St. Peter's Road *Goddard & Paget*
 BN. 12 March 1880, p.308 (with plan)
58. Pair of cottages, Saltersford Road *J.W. Simpson*
 BN. 15 December 1905, p.829 (with plan)
 Built for J. Loseby; either nos. 65-67, or 69-71, both slightly altered.
59. West Melton & Rossendale, 30-32 Springfield Road *Pettifor & Simpson*
 BN. 29 April 1892, p.617
60. Four houses, 6-8 Stoneygate Road *Isaac Barradale*
 BN. 20 August 1880, p.210
 Built for C.S. Robinson, manager of Leicester Gasworks.
61. Three houses, Stoneygate Road *James Tait*
 BN. 6 February 1880, p.160
 Built for Alderman H.T. Chambers; probably Nos-15-19.
62. Town Hall, Town Hall Square *F.J. Hames*
 BN. 19 September 1873, p.310 (with plan)
 B. 1 November 1879, pp.1204, 1206-7 with plan)
 B. 5 June 1897, p.510
 Opened 1876.
63. House, 2 University Road *Stockdale Harrison*
 BN. 28 October 1881, p.560
 Built for Joseph Harvey, a solicitor; now Leicester University School of Education.
64. Pair of villas at Leicester *T.P. Bown*
 BN. 8 December 1893, p.769
 Probably 12-14 Victoria Park Road; built for William Bodycot.

LOUGHBOROUGH

65. Leicestershire Bank, Market Place *Goddard, Paget & Goddard*
 B. 20 June 1896, p.537 (with plan)*
 BN. 14 January 1898, p.60*
 Now Midland Bank