



Dance4 presents*

Europe in Motion: Mosaic Identities

Thursday 24 February at 7.30pm £7 / £5

The next generation of dance artists, drawn from the Netherlands, Austria, Turkey and the UK, share their ideas on the future of dance performance.

Expect to be intrigued and surprised as, fresh from some of Europe's most important dance festivals, they bring their exciting new perspectives to Leicester.

A thought-provoking evening of performance and discussion for dance professionals and all those interested in the future of this art form.

DANCE4

Free lunchtime Soundbites

Tuesdays and Thursdays, starting at 12.45pm

18 January – 31 March (not 22 or 24 February)

Enjoy a variety of light lunchtime entertainment, from electric violin to storytelling, solo piano to big band. Artists include Guthlaxton College and music scholars supported through the partnership between the Philharmonia Orchestra and Leicester University.

NEW

Dance Bites: a unique opportunity to enjoy solo and group performances by dance students at De Montfort University as part of the Soundbites programme.

All performances last no more than an hour. For full details, www.embracearts.co.uk, e: arts-centre@le.ac.uk or pick up a leaflet.



Chris Redgrave

Roger Coull and Philip Gallaway – violins; Rose Redgrave – viola; Nicholas Roberts – cello

The Coull Quartet

Friday 4 March at 7.30pm £15 / £12

Haydn: Quartet in F minor Op 20 no 5; Tippett: Quartet no 1
Schubert: Quartet in G major D887

We are delighted to welcome back the ever-popular Coull, one of Britain's most-respected string quartets, for the second in a series of three concerts at Embrace Arts.

This highly-acclaimed ensemble boasts a rare combination of maturity and freshness and its performances have delighted chamber music lovers throughout the UK and around the world, from the USA to China. www.coullquartet.com

NUS

Limited number of tickets for just £2.50 available for NUS card holders from 30 minutes before curtain up, subject to status and availability.

Lunchtime concert

Charles Owen – piano

Wednesday 13 or 20 April (tbc) £6.50

Bach: Partita no 6 in E minor;
Schubert: A minor Sonata D.845

Jack Liebeck



Charles Owen has performed to outstanding critical acclaim both in the UK and internationally, including the Barbican, Wigmore Hall, the Lincoln Centre and Carnegie Hall and the Moscow Conservatoire. www.charlesowen.net

This concert has been made possible thanks to The Ernest Mathieson Bequest.

“one of the finest British pianists of his generation”
Gramophone magazine

Dance and Music

Embrace Arts is proud to bring Café Sci to Leicester with

NEW

Radioactivity – Friend or Foe?

Thursday 17 March at 6pm
£4 / £3 (includes free drink)

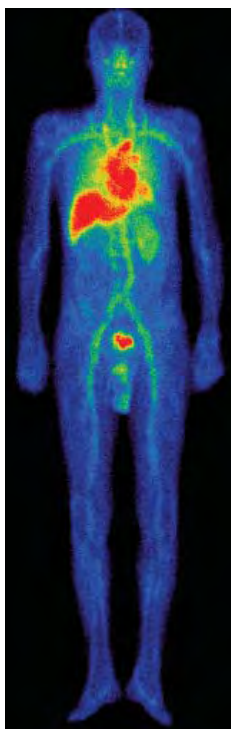
How can the arts debunk patients' myths and fears about radio-activity imaging?

Find out more about a unique collaboration exploring this question in an evening of lively discussion and performance. Featuring contributions from Professor Alan Perkins from Queens Medical Centre, Dr John Lees from Leicester University, Andrew Williams, Director of Random Line Performance Company, and students from Crownhill School, Leicester.

Plus the world premiere of a new artwork produced by Random Line in collaboration with Movers Theatre Company, the Embrace Arts theatre company in residence.

■ Café Sci is where anyone can come to explore the latest ideas in science and technology outside a traditional academic context.

www.cafescientifique.org



Leicester Jazz House presents*

Dave Newton – piano

Friday 28 January at 8pm
£7 / £5 (NUS only)

A welcome return for a musician voted Best Jazz Pianist six times in the British Jazz Awards.

www.davidnewton.net

Michael Garrick and Dominic Ashworth

Friday 11 February at 8pm
£8 / £6 (NUS only)

Enjoy the interplay between the strikingly individual piano playing of Michael Garrick and the great guitar of Dominic Ashworth.

www.michaelgarrick.co.uk
www.dominicashworth.eu

John Law Opt Trio

Friday 25 March at 8pm
£10 / £8 (NUS only)

John Law's latest project features a back-to-basics piano, bass (Tom Farmer) and drums (Asaf Sirkis) trio with interesting arrangements of 'other people's tunes'.

www.nday.co.uk/JohnLaw.html

Pete Churchill Trio

Saturday 2 April at 8pm
£10 / £8 (NUS only)

An inspiring evening of jazz vocals from renowned singer/pianist Pete Churchill with Steve Watts (bass) and Dave Wickins (drums).

www.petechurchill.co.uk

■ Enjoy Pete's daytime jazz choir and vocal workshop and pay only £5 for this concert – see 'Workshops' overleaf for details.

Music at the Arts Bar

Showcasing the best in regional jazz and blues.

Great range of hot and cold food available, including main dish from just £3. Licensed bar.

Free car parking next door. Tickets just £6. All gigs start at 8pm.



Thursday 3 March Mellow Baku with the Mike Sole Quartet

The ever-popular jazz and roots singer with tracks from her latest CD and more. With Mike Sole – piano; Steve Nutter – double bass; David Anderson – drums; and Mel Thorpe – flute and tenor sax.

www.myspace.com/mellowbaku



Thursday 3 February Nicole van de Kuinder with the Brian Humpherson Quartet

Fabulous vocals from the great American songbook and more, accompanied by Don Blakeson – trumpet; Martin Slipp – double bass; and Andrew Sime – drums.

<http://nicolevandekuinder.tripod.com>

Thursday 7 April Corey Mwamba Trio

Free-wheeling, spontaneous and creative music from Derby vibes player Corey Mwamba, with Dave Kane (bass) and Joshua Blackmore (drums).

www.trio.coreymwamba.co.uk



An exciting mix of stand-up, cabaret and theatre with some of the very best hit shows from this year's Edinburgh Fringe.

We've included the approximate length of each show to help you plan how to get the most out of all the Comedy Festival events across the city.

Shows are suitable for 16+ years unless otherwise shown.

Phizzical Theatre presents*

Comic Couplings

A modern take on two Victorian farces

Saturday 5 and Sunday 6 February at 7.30pm £7.50 / £5

Saint and Sinner

Letting a room to Mr Saint by day and to Mr Sinner by night works well for Mrs Sharp, until Mr Saint is unexpectedly given a day's holiday and the two lodgers meet. Left alone while she sorts out another room, they discover they share more than the same bed.

The Proposal

A nervous young man comes to propose marriage to his neighbour's daughter. But their squabbling threatens to destroy their chances of a match.

14+ years. Duration: 95 mins
www.phizzical.com



The University of Leicester Alumni Association 2011 lecture – Thursday 24 March at 6pm

Cosmic Quest: A History of Astronomy

by Heather Couper and Nigel Henbest

Over the millenia astronomy has flourished into the most all-embracing of the sciences.

Its progress has been led by inspirational characters and outright mavericks who have pushed our knowledge of the heavens forward. This stunningly-illustrated presentation by two of today's most-respected astronomers concentrates on the people and personalities who have asked the biggest questions of all.

Free but donations on the night welcome. Proceeds to benefit scholarships in the College of Science and Engineering.

Please book your seats in advance through the Embrace Arts box office. All enquiries to Sue Rees at alumni.relations@le.ac.uk or call 0116 223 1071.



Caroline Horton in

Family friendly

You're Not Like Other Girls Chrissie

Saturday 12 February at 3pm
£9 / £7.50

Paris 1945. Eccentric, short-sighted mademoiselle Christine waits to be reunited with her English fiancé. A tender, comic portrayal of one woman's experience of love and war from this Stage Awards 2009 best solo nominee.

10+ years. Duration: 60 mins
www.carolinehorton.net



Misshapen Theatre Company in

The Wake

Saturday 12 and Sunday 13 February at 7pm
£7 / £6

Alec only knows who he is when he's pretending to be somebody else, somebody like his dead father James. But an unexpected gatecrasher is waiting in the wings, ready to steal his spotlight. And when everyone is playing a part, can you ever know who you really are?

Duration: 40 mins



Terry Saunders in

Six and a Half Loves

Saturday 12 and Sunday 13 February at 8.30pm
£9 / £7.50

A tale of perfect couples who never quite reach their perfection. With animation and storytelling, this is a surreal cross between South Park and Love Actually.

Duration: 60 mins
www.terrysaunders.co.uk

The John Lewis Partnership Dramatic Society in

Comedy Shorts

Sunday 13 February at 5pm £6 / £4

An afternoon of award-winning sketches, all by professional writers, in this follow-up to the group's hit show at last year's festival.

14+ years. Duration: 50 mins.
www.amdram.co.uk

Sunday 13 February special

Book for all three shows for £18 / £15. Pre-show or interval sharing platter and drinks for two in the Arts Bar just £10.

Shows are suitable for 16+ years unless otherwise shown.

Chambers Management presents*

Andrew Lawrence: The Too Ugly for Television Tour

Friday 4 February at 8pm
£10 / £7

Life's not fair and the world's a disgusting place to live. Andrew Lawrence tries to find some consolation. Edinburgh Comedy Award nominee 2006 and 2007. Best UK headline act Chortle Award nominee 2010. As seen on BBC1's Michael McIntyre's Roadshow and Channel 4.

May cause offence.
Duration: 110 mins

www.andrewlawrencecomedy.co.uk

"very funny ... not for the easily shockable" *The Daily Telegraph*

Liz Bentley* in

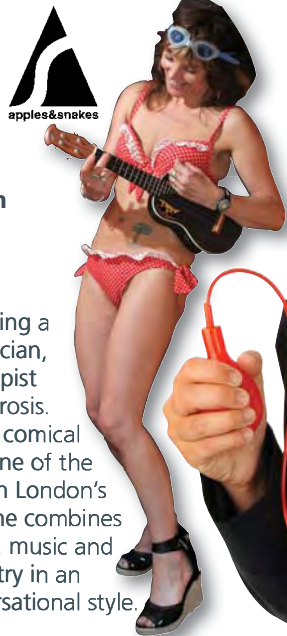
Crash Bash Trash

Thursday 10 February at 8pm
£9 / £7

Liz shares her observations and experiences of being a writer, poet, musician, mother and therapist with multiple sclerosis. This intimate and comical solo show from one of the quirkiest voices on London's spoken word scene combines stand-up comedy, music and performance poetry in an anecdotal, conversational style.

Duration: 60 mins
www.lizbentley.co.uk

"Like a female Ivor Cutler"
The Scotsman



Zoe Lyons

Life after Edinburgh

Saturday 12 February at 12.30pm Free

Hear from a selection of performers about how they are benefiting from the developing relationship between Leicester Comedy Festival and the Edinburgh Fringe – and how it could help you in the future. Chaired by Comedy Festival Director Geoff Rowe and featuring a panel of speakers from across the UK. Just 40 places available so please book in advance.

Objective Talent Management presents*

Zoe Lyons

Thursday 17 February at 8pm £12 / £10

Just get on with life and be happy. Sounds so simple doesn't it? But it's easier said than done for Zoe. She has come to realise that life is too short, and she is going to try to enjoy it – although "try" sounds like there's effort involved and she's not particularly pleased about that. As seen on Michael McIntyre's Roadshow (BBC1) and Mock The Week (BBC2).
Duration: 110 minutes. www.zoelyons.co.uk

"one of UK comedy's fastest-rising talents" *The Guardian*

Beyond Compere presents*

Chris McCausland: Emotional Retard

Friday 18 February at 8pm £9 / £7

Life, relationships and the perils of eating your girlfriend's Chunky Kit Kat – this stand-up show gently sticks two fingers up at those who get offended on people's behalf. Having lost his sight to a degenerative eye condition, Chris has become all too prone to surprise attacks from stealthy lamp posts. If he can't be an emotional retard, then surely love can't be blind and the economy can't be crippled. As seen on Comedy Central, BBC TV and ITV4.

Duration: 60 minutes
www.chrismccausland.com

"An unexpected whirlwind. Pure joy!"
The Stage

Chris McCausland



Red Comedy presents*

Paul Sinha

Saturday 19 February at 8pm £10 / £7

Paul Sinha has spent much of the previous decade garnering rave reviews for his self-deprecating tales of his life as a GP, lovelorn gay bachelor, quiz fanatic and social coward. This year, he doesn't want to discuss turning 40, because he has bigger fish to fry. A racist called him a racist. Paul would like to fight back.

Duration: 60 minutes
www.paulsinha.com

"an utterly amazing piece of stand-up" *Fringe Guru*

Free entry

Our galleries are open 10am – 6pm
Monday to Friday.

We are also open some weekends but please call us on
0116 252 2455 weekdays to check beforehand.

The Wheel Turns

Monday 10 January to Friday 25 February

A celebration of contemporary developments in collage and assemblage. The Wheel Turns features the work of more than 20 photographers, printmakers, textile artists and sculptors.

In homage to Marcel Duchamp's Bicycle Wheel, created almost a century ago, the exhibition illustrates playful ways of thinking and working with everyday materials.

Free Preview evening – all welcome
Friday 7 January, 6pm – 8pm

Includes at 6.30pm a presentation featuring Michael Bowdidge and other exhibiting artists. Please contact us in advance to reserve your place.

Collage: taken from the French 'coller', to glue
Assemblage: the art of assembling unrelated objects into three-dimensional sculptural forms.

Michael Bowdidge: Flyer 2009



NEW in 2011

Crafts on sale at Embrace Arts

Featuring jewellery, textile and ceramics to suit all budgets. Your chance to buy beautiful and unique works by some of the region's finest makers. Perfect for that special gift – or why not treat yourself?

■ Gift vouchers also available.



Julie Vernon

Workshops this way

Graham Ensor: crux 1

Monday 7 March to Friday 15 April

Regional artist Graham Ensor transforms Embrace Arts as he applies linear drawings directly to the fabric of the building, travelling around the architecture and exploring the space.

This site-specific installation aims to inspire people to consider their relationship with our award-winning building and with each other, and stimulate their awareness of their environment.

What journeys (physical and metaphorical) will you take?

www.ensor.org.uk

Both the following events are free

Preview evening – all welcome
Friday 4 March, 6pm – 8pm

Please contact us in advance to reserve your place.

Meet the artist
Tuesday 8 and Thursday 10 March,
10am – 5pm

Pop in to meet Graham Ensor and add your own contribution to his installation.

City Crossings

Installations by Ensor will also be at LCB Depot on Rutland Street and Leicester Print Workshop, 50 St Stephens Road, during the exhibition.

See www.embracearts.co.uk for details.

Graham Ensor



Crux: A crucial or vital moment; a critical point; the basic or essential feature; a puzzling problem.

Children's workshop

Drawing dragons

Sunday 30 January, 10am – 3.30pm

Led by Diane E Hall, £18

An opportunity to use a wide range of materials to create a mixed media artwork of a dragon in this fun workshop to celebrate Chinese New Year. All materials provided. For 6+ years.



Workshops

All sessions, except where indicated, are suitable for both beginners and those with experience. Adults with a disability are particularly welcome. The fee generally includes materials and there is free car parking next door at evenings and weekends.

Please book in advance on 0116 252 2455. For more information, call us or visit www.embracearts.co.uk

The full price applies to anyone over 60 who does not qualify for any of the concessions listed in the 'How to book' section.



Scott Bridgwood

Saturday art

10am – 3.30pm, £35 / £17 per session

Life drawing for absolute beginners

29 January

Led by Scott Bridgwood

Discover how to observe and draw in totally new ways, by using various media to represent the human form convincingly. Designed for complete beginners to life drawing, this is an ideal opportunity to start 2011 by trying something new. Over 16s only please.

Life drawing

26 February

Led by Diane E Hall

Explore the exciting potential of life drawing in this full-day workshop using a variety of approaches and media. Learn to observe carefully and appreciate the proportion, tone and form of the model to create vibrant, interesting work. Suitable for both those with considerable experience and beginners. Over 16s only please.

The fundamentals of portraiture

26 March

Led by Scott Bridgwood

Experiment with innovative approaches to portraiture, beginning with a range of short poses before working towards a more finished painting in a variety of media. Suitable for all levels of ability.

The painted nude

30 April

Led by Scott Bridgwood

Bridge the gap between drawing and painting the human figure by developing your confidence in a wide variety of techniques such as speed painting, flesh tones, directional brushstrokes and more. Suitable for all levels of ability. Over 16s only please.

More workshops this way



Crafts

Make silver rings

Saturday 5 February, 10am – 3.30pm

Led by Kate Bajic, £55 / £28

Learn basic jewellery-making techniques to design and make three different rings using silver sheet and wire. A great handmade gift for Valentine's day, or a treat for yourself. All equipment and materials provided. Over 16s only please.

Creative writing

Playing with words

Saturday 19 February, 10am – 1pm

Led by Lynn Rennie Parker, £20 / £10

Look at ways of presenting words as visual culture, and then create your own visual poetry using collage and typography in this practical workshop. No previous experience required. To coincide with **The Wheel Turns**, our collage and assemblage exhibition.

Please note for all workshops

Sorry, we can only run a workshop if there are a minimum number of confirmed bookings. If we have to cancel because of low numbers, we will let you know in advance of the day and return your booking fee in full.



Music

Classical guitar performance skills

Sunday 27 March, 10am – 3.30pm

Led by Yvonne Bloor, £30 / £15

Explore new techniques and revitalise your performance skills. Aimed at players with at least two years' experience, this is an opportunity to extend your current repertoire, play ensemble, and share tips with others. Over 16s only please.

Leicester Jazz House presents*

Jazz choir and vocal workshop

Saturday 2 April, 10.30am – 3.30pm

£30 / £15 (NUS / under 19s only)

Experience the joy of learning and singing together a variety of material with rich harmony. No need to read music as all teaching is by ear. For all those who enjoy singing jazz and blues, from complete beginners to the more experienced. Led by jazz singer, pianist and educator Pete Churchill.

8pm – concert by Pete Churchill Trio. Tickets only £5 for workshop participants.

In association with

Knighton Chamber Orchestra

Conductor: Paul Jenkins
Saturday 19 February at 7.30pm
Fraser Noble Hall £8 / £6

Nielsen: Flute Concerto (soloist Dana Morgan); Schumann: Piano Concerto (soloist Francois Salignat); Beethoven: Symphony No 5.
www.knightonchamberorchestra.com

Brian Humpherson Quintet

Saturday 5 March
Embrace Arts at 7.30pm £7 / £5

Jazz originals and standards.

These events are produced and managed by the performers and supported by the University of Leicester.

University of Leicester Sinfonia

Conductor: Michael Sackin
Saturday 5 March
Fraser Noble Hall at 7.30pm
£8 / £6

Sonja Grossner: Destiny; Bartók (completed by Tibor Serly): Viola Concerto (soloist Enikő Magyar); Dvřorák: Symphony No 9 in E minor Op 95 (From the New World).

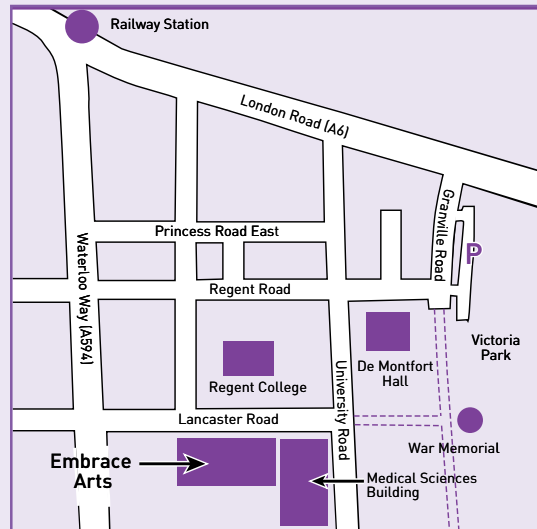
University music

Student music societies

Saturday 19 March
Queen's Hall at 7pm £6 / £5



How to get here



Embrace Arts
Richard Attenborough centre
Lancaster Road
Leicester LE1 7HA
t: 0116 252 2455
e: arts-centre@le.ac.uk
www.embracearts.co.uk
RNID Typetalk service:
18001 0116 252 2455



How to book



Call us to pay by debit or credit card on 0116 252 2455. You can collect your tickets or we can post them to you for an extra 50p.



Pop in to see us and buy over the counter.



Post details of the tickets you would like, a cheque for the total made payable to University of Leicester and a SAE to Box Office, Embrace Arts, Richard Attenborough centre, PO Box 138, Lancaster Road, Leicester LE1 7HA.



We're open 10am – 6pm, Mondays – Fridays (closed Thursday 21 – Tuesday 26 April).

Sorry, we only give refunds if a performance, event or workshop does not take place.

Concession prices: apply to over 60s (for performances and events only), under 19s, members of National Union of Students (NUS), registered unwaged, ES40 holders and those in receipt of disability living allowance and Jobseekers, unless otherwise stated. Some events give an additional reduction for NUS members and those under 19. Disabled patrons requiring particular assistance are entitled to a free ticket to bring a personal assistant. A discount may be available for performances and events for parties of ten or more. Please ask at the time of booking. Family tickets where mentioned are for two adults and two children.

Tickets also available from:

Tourist Information Centre, 7/9 Every Street, Town Hall Square, Leicester. t: 0116 299 4444 (credit card bookings accepted) and at www.goleicestershire.com.

Access: Embrace Arts is fully accessible to people with disabilities and has an induction loop system. Access to other venues is not difficult, and there are wheelchair accessible toilets in all University venues. We have four car parking spaces for disabled blue badge holders. Please let us know in advance if you would like parking at any of our other venues.

To find us: put LE1 7HA in your sat nav or visit our website www.embracearts.co.uk for directions.

Car parking: Evenings and at weekends – **free** in the Medical Sciences Building car park next door. Weekdays – pay and display on Lancaster Road and in Victoria Park (De Montfort Hall, entrance in Granville Road).

Public transport: We are ten minutes' walk from Leicester railway station and served by buses 48, 80/80A (term-time only) and 302.

We are grateful to The Ernest Mathieson Bequest, and Arts Council England for its support and advice.

Events marked * are produced and managed by the performers and/or their agents and hosted by the University of Leicester.

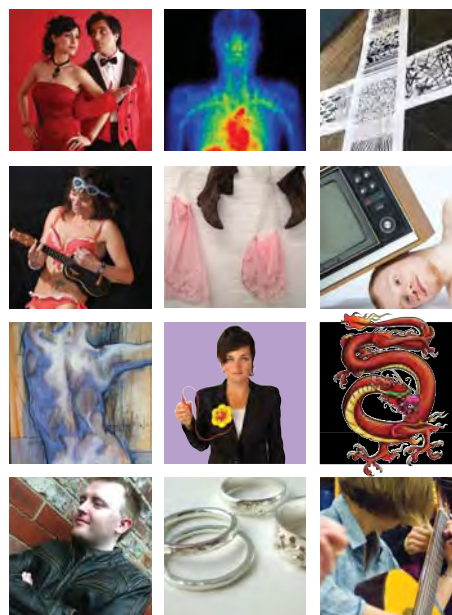


January			
Mon 10	The Wheel Turns	opens	Art exhibition
Fri 28	Leicester Jazz House: Dave Newton	8pm	Jazz
Sat 29	Life drawing for absolute beginners	10am - 3.30pm	Visual art workshop
Sun 30	Drawing dragons	10am - 3.30pm	Children's workshop
February			
Thurs 3	Music at the Arts Bar: Nicole van de Kuinder / Brian Humpherson Quartet	8pm	Jazz
Fri 4	Andrew Lawrence	8pm	Comedy Festival
Sat 5	Make silver rings	10am - 3.30pm	Crafts workshop
Sat 5 / Sun 6	Phizzical Theatre: Comic Couplings	7.30pm	Comedy Festival
Thurs 10	Liz Bentley	8pm	Comedy Festival
Fri 11	Leicester Jazz House: Michael Garrick and Dominic Ashworth	8pm	Jazz
Sat 12	Life after Edinburgh	12.30pm	Comedy Festival
	Caroline Horton: You're Not Like Other Girls Chrissie	3pm	Comedy Festival
Sat 12 / Sun 13	Misshapen Theatre Company: The Wake	7pm	Comedy Festival
	Terry Saunders: Six and a Half Loves	8.30pm	Comedy Festival
Sun 13	John Lewis Partnership Dramatic Society: Comedy Shorts	5pm	Comedy Festival
Thurs 17	Zoe Lyons	8pm	Comedy Festival
Fri 18	Chris McCausland	8pm	Comedy Festival
Sat 19	Playing with words	10am - 1pm	Creative writing
	Knighton Chamber Orchestra	7.30pm FNH	In association with
	Paul Sinha	8pm	Comedy Festival
Thurs 24	Europe in Motion	7.30pm	Dance
Fri 25	The Wheel Turns	closes	Art exhibition
Sat 26	Life drawing	10am - 3.30pm	Visual art workshop
March			
Thurs 3	Music at the Arts Bar: Mellow Baku / Mike Sole Quartet	8pm	Jazz
Fri 4	The Coull Quartet	7.30pm	Music
Sat 5	Brian Humpherson Quintet	7.30pm	In association with
	University of Leicester Sinfonia	7.30pm FNH	In association with
Mon 7	Graham Ensor: crux 1	opens	Art exhibition
Thurs 17	Café Sci: Radioactivity – Friend or Foe?	6pm	Special event
Sat 19	Student music societies	7pm QH	University music
Thurs 24	Cosmic Quest: A History of Astronomy	6pm	Special event
Fri 25	Leicester Jazz House: John Law Opt Trio	8pm	Jazz
Sat 26	The fundamentals of portraiture	10am - 3.30pm	Visual art workshop
Sun 27	Classical guitar performance skills	10am - 3.30pm	Music workshop
April			
Sat 2	Jazz choir and vocal workshop	10.30am - 3.30pm	Music workshop
	Leicester Jazz House: Pete Churchill Trio	8pm	Jazz
Thurs 7	Music at the Arts Bar: Corey Mwamba Trio	8pm	Music
Fri 15	Graham Ensor: crux 1	closes	Art exhibition
Sat 30	The painted nude	10am - 3.30pm	Visual art workshop

Spring 2011



The University of Leicester's arts centre – open to all



Performances Events Workshops

Box office: 0116 252 2455
www.embracearts.co.uk

What's on

January – April 2011