

Conference News

Spring 2005



INVESTOR IN PEOPLE



Gilbert Murray Conference Suite

Gilbert Murray Conference Suite attracts a large variety of customers, those requiring one-day academic meetings (available during term) to multi-night residential bookings for over 300 delegates per night (during vacations). The layout of the facilities is very attractive to both organisers and delegates with numerous meeting rooms, accommodation, social areas and dining space conveniently located close together.

The compact site allows Gilbert Murray to be used in conjunction with adjacent halls, providing even greater choice for organisers.



Gilbert Murray Conference Suite & Bowdler Court Bedroom

Case Study

ENCAMs – the charity which runs the Keep Britain Tidy campaign – is a national environmental charity, part-funded by government. Its campaigns and initiatives are targeted at specific audiences, aiming to achieve a sustained improvement in local environmental quality and to reduce anti-social behaviour.

ENCAM had a network of 12 regional offices and other staff who work from home, so the staff conference plays a vital role in bringing the organisation's employees together and delivering effective internal communications.

The objective of the two-day conference was to motivate, inform and engage staff, and also provide an enjoyable social environment. Facilities were needed to host a number of varied activities, and all 140 delegates required overnight accommodation. Working closely with the University of Leicester team, ENCAMs event manager Anne Burns delivered

a packed and highly successful event, utilising the conference and accommodation facilities.

The Gilbert Murray Conference Suite played host to the conference, which with a combination of main keynote sessions and smaller workshops and plenary sessions, made full use of the venue's meeting rooms. Delegates enjoyed a conference dinner and disco, with additional entertainment from magicians and a caricaturist, and were accommodated overnight on campus.

Anne Burns said: "Everything worked very well, and we were pleased with the quality of the facilities. Feedback from delegates was excellent, and they were pleasantly surprised by the high standard of accommodation."

"It is an important event for us in terms of communicating key messages and as an opportunity for regionally-based teams to meet and engage with other staff. Leicester worked with us on all aspects, including arranging the additional features that helped make it such a success."

Gilbert Murray Hall – at a glance

- 13 meeting rooms (10 - 350 delegates)
- 140 standard bedrooms with washbasins
- 70 en suite bedrooms
- Dining Room close by for up to 350 delegates
- Modern bar with late license
- Ample free car parking
- Marquee areas
- Available for exclusive use
- Available for day meetings during term-time

Telephone now for availability of this hall

To help you plan your future events, our new pocket calendar detailing dates up to 2010 is now available. If you have not yet received your copy, please telephone now for your free calendar.



University of Leicester

THE RESIDENTIAL & CATERING SERVICE

Thinking Ahead

As the conference and events industry grows, the University of Leicester is making sure it stays focused on the reason why so many organisers choose its facilities:

"We will have to go a long way to find anywhere else with such a well organised conference service". *ABTAPL Conference Secretary*

The number of event bookings has doubled in the last five years and with the increase in demand, it is vital to maintain the high standard of service.

The team is expanding and so too are the training opportunities available to them. In addition to the ongoing commitment to Investors in People and Welcome Host, last summer eighty-four members of staff completed National Vocational Qualifications in Customer Care and Food and Drink Service.

As well as ensuring the team are fully trained, reinvestment to improve the facilities is a priority, with an extensive redecoration and refurbishment plan in place for the next ten years.



INVESTOR IN PEOPLE



House Full of Romance

A wave of romance recently swept through Stamford Hall for the Romantic Novelists Annual Conference, a three-day event which took place amongst the beautiful gardens – a setting for a romantic novel in itself. Stamford Hall showed its versatility in acting as a base for over 140 new and established novelists to convene, network and share their skills. Delegates included best selling authors such as Barbara Taylor Bradford, Elizabeth Chadwick and Eileen Ramsey.

September 2004 marked the 20th anniversary of DNA genetic finger printing; this revolutionary technique was discovered by Professor Sir Alec Jeffreys at the University of Leicester.

Thousands attend Festival

During June 2004, guests came from across the country as the University reverberated with the sounds of Irish music for the All Britain Fleadh Irish musician competition.

An event of such magnitude required a wide range of rooms, facilities and services along with a professional and attentive team of co-ordinators to ensure its success. Carmel Burke, one of the event organisers said "The rooms and halls we used for the competitions were ideal –

they were comfortable and provided enough room and space for spectators and competitors alike. The rooms we used on the Saturday evening for the Ceili, music session and singing club were wonderful – what a great atmosphere in the Charles Wilson building that night!" The Charles Wilson Building was also used as the main registration and catering base during the event. "The catering facilities were efficiently run and the food was delicious."

Home Comforts

Over the previous three summers we have been delighted to welcome over one thousand holiday makers with Saga. Staying in the beautiful Beaumont Hall, guests choose Leicester because of the diverse visitor attractions, home from home accommodation and welcoming staff whose aim is to ensure every guest has an enjoyable stay. In addition, Saga have honoured the University of Leicester with the Highly Commended award.

"The standard of consideration and kindness shown by the staff was really

heart warming." *Saga guest, July 2004*

"People might be surprised to learn how large the Leicestershire tourism economy is. But it isn't really surprising that SAGA, and indeed many other organisations, choose our county for their holidays. Great access, a thriving city, beautiful countryside and attractions to suit all tastes, why go anywhere else?"

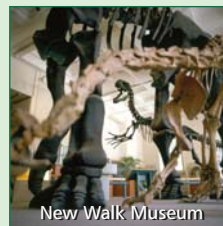
Martin Peters, Chief Executive, Leicester Shire Promotions



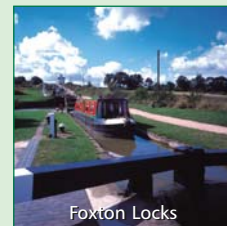
Beaumont Hall



National Space Centre



New Walk Museum



Foxton Locks



The University is showing its support for fair trade products with the sale of Tchibo and Rombouts Fairtrade coffee and tea, together with Cafe Direct coffee in vending machines at the city campus. Plans are in place to extend this portfolio of products and also offer fair trade products to conferences and accommodation groups.



EXHIBITION 2005

where finding the right venue is academic

Meet us at the Venuemasters Exhibition:
Business Design Centre, London,
11 May 2005, Stand 28
Contact us now to receive your invitation

For further information, to enquire about our conference facilities or to check availability for your next event, please contact the Conference Office on:

Tel: +44 (0) 116 271 9933; Fax: +44 (0) 116 272 0352; Email: conferences@le.ac.uk

University of Leicester Conference Services, Stamford Hall, Leicester LE2 2ND, <http://www.le.ac.uk/conference/>