

# John Foster Hall

Completed in October 2006, John Foster Hall is a contemporary state-of-the-art venue with versatile conference, meeting and event facilities complete with adjacent en suite bedroom accommodation.

The main building comprises of reception area, hospitality bar, dining room and 6 multi-functional meeting rooms, the largest of which can accommodate up to 110 delegates seated theatre style.

John Foster Hall is an ideal venue for all types of conferences or events and can be seamlessly combined with any of the neighbouring venues such as Gilbert Murray Hall, Stamford Hall or Beaumont Hall.

All 570 bedrooms at John Foster Hall have an en suite bathroom including 29 rooms adapted for wheelchair users.



## Meeting

- Seats up to 110 delegates theatre style (300 in dining room)
- State-of-the-art facilities
- 6 meeting / seminar rooms
- Flexible seating in all rooms
- Free wireless internet access<sup>1</sup>
- Natural daylight throughout

## Hospitality

- Licensed bar with hospitality area
- Air conditioning
- Alfresco balcony
- Additional rooms available for catering

## Dining

- Main dining hall can seat 250 delegates
- Private dining available
- In-house catering
- Alfresco balcony

## Accommodation

- 541 en suite bedrooms
- 29 fully adapted rooms for wheelchair users
- Private kitchen area for every 4/5 rooms
- Free internet access in all rooms
- Tea/coffee making facilities

## Additional

- Free car & coach parking
- Laundry facility
- All public areas are wheelchair accessible
- 24 hour porter service
- Plasma screens in public areas for displaying delegate information

## Accommodation

### Location

	Number of Rooms	Shared Kitchen Area	Shared Social Space	Telephone with pay-as-you-go-service	Laundry Facility	Free Internet Access (Fixed)	Free Car Parking (approx. no. of spaces)	Wheelchair Access
<b>John Foster Hall</b>	-	-	-	-	✓	-	133	-
Bedroom - En suite (single)	541	✓	✓	✓	-	✓	-	-
Bedroom - Adapted (en suite, single)	29	✓	✓	✓	-	✓	-	✓

## Conference, Meeting & Event Facilities

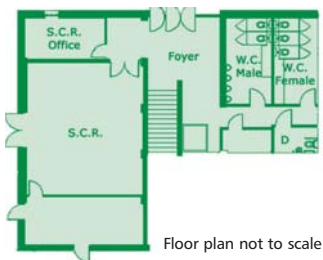
### Location

John Foster Hall	Max. Dining Capacity	Room Capacities						Approx. Room Dimensions L(m)	Approx. Room Dimensions W(m)	Free Internet Access (F=Fixed, W=Wireless)	Free Car Parking (approx. no. of spaces)	Marquee Area	Wheelchair Access
		Hospitality Bar	Theatre	Boardroom	Seminar	Classroom							
<b>John Foster Hall</b>	-	✓	-	-	-	-	-	-	-	133	-	-	-
Dining Room	250	-	300	-	-	100	13	21	✓	-	-	-	✓
Swithland Room	-	-	60	16	20	18	7.5	7.7	✓	-	-	-	✓
Tilton Room	-	-	34	8	30	12	5	7.5	✓	-	-	-	✓
Swithland & Tilton Room Combined	-	-	110	34	70	28	7.5	15	✓	-	-	-	✓
Rothley Room	-	-	20	12	10	12	5.5	9.4	✓	-	-	-	✓
Oakham Room	-	-	35	20	20	12	6.2	9.4	✓	-	-	-	✓
Rothley & Oakham Room Combined	-	-	75	24	50	24	11.7	9.4	✓	-	-	-	✓
Quenby Room	30	-	60	25	35	18	7	13.5	✓	-	-	-	✓
Senior Common Room	-	-	45	16	35	18	6.7	7.7	✓	-	-	-	✓

<sup>1</sup> Wireless signals are not guaranteed as signals fluctuate with varying conditions and equipment.





### John Foster Hall – Lower Ground Floor Plan



Floor plan not to scale

### Key

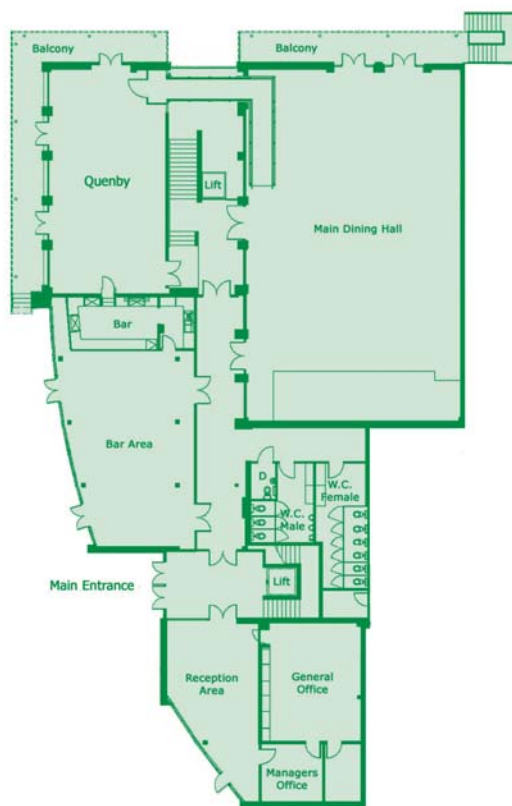
-  Toilets accessible to wheelchairs
-  Partition

*Please note: all public areas are fully accessible to wheelchair users*

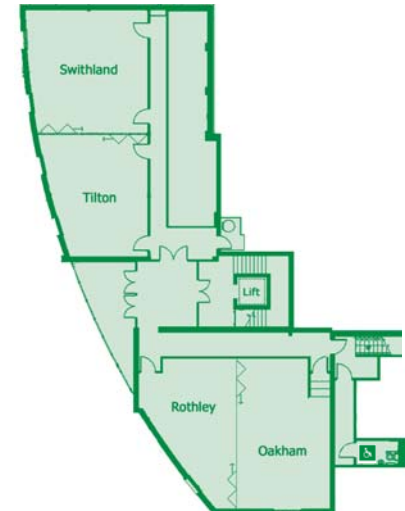
**John Foster Hall** is just one of the many venues at Leicester Conferences. The extensive portfolio enables organisers to choose from a city centre or countryside location. The range of facilities encompasses purpose built lecture theatres for 500 to small board meeting rooms with charm and character as well as a choice of self catered or fully catered accommodation packages.

Contact our team for more information.

### John Foster Hall – Ground Floor Plan



### John Foster Hall – 1st Floor Plan



**T:** +44 (0)116 271 9933  
**W:** [www.le.ac.uk/conference](http://www.le.ac.uk/conference)  
**E:** [conference@le.ac.uk](mailto:conference@le.ac.uk)

