

# Bulletin

<http://www.le.ac.uk>

OCTOBER – NOVEMBER  
2001

This Issue: • New Centres of Excellence • 80th Anniversary Celebrations • Plans for Manor Road

## UNIVERSITY ANNOUNCES £31 MILLION EXPANSION AND IMPROVEMENT PROGRAMME

► The University of Leicester has announced a £25 million expansion plan creating two new buildings which will house centres of excellence in biomedical research, space science and mathematics.

Coupled with this development is £6 million for refurbishment programmes, the creation of new laboratories and the purchase of new equipment that will advance the

University's standing in areas such as heart research, green technology, archaeology and chemistry.

The development has been made possible through two separate streams of funding which have dovetailed to allow the University to build for the future.

The University has received £10 million from the biomedical research charity the Wellcome Trust

that will contribute towards the planned new biomedical sciences research building.

The University also received £10million from the Government's Science Research Investment Fund (SRIF) in partnership with the Wellcome Trust, to renew science infrastructure. The University of Leicester received the 17th highest award

(continued on page two)

## Sunday Times places University in UK Top 20

► The Sunday Times University Guide published on September 16, has placed the University of Leicester in the UK's top 20 universities. This shows a rise of four places on the University's 2000 ranking of 24.

The University was also acknowledged for its excellence in teaching and was cited in the 'Best Marks for Teaching' league table.

In its editorial, the Sunday Times states: "Leicester has gone three years without a subject being rated anything but excellent for teaching quality... this success has led to a steady rise by the University in our league table, breaking into the top 20 for the first time this year."

The report adds that the University – which earlier in the year was ranked top 20 by the Financial Times – comes close to its benchmark targets for recruitment from state schools, the lowest social classes and areas of low participation in higher education – yet still manages to record one of the lowest dropout rates in the country. 📌

## New Look Bulletin

► This new slim-line Bulletin is paving the way for a new Webzine to be developed for the University.

Plans are being laid for a web-based communications tool that will absorb much of the information carried in Bulletin as well as up-to-date news and information from departments. An eight-page Bulletin will now appear bi-monthly and will continue to contain the supplement for Books and Research. 📌



## LOVE IN LEICESTER

► A new Bollywood movie depicting the hero and heroine meeting and falling in love as students of the University of Leicester has been filmed on campus.

Is Pyaar Ko Kya Naam Doon (What Name Shall I Call Our Love) involved over 100 crew and cast who have set up camp at the University as the perfect location for their film.

The movie stars model-turned-actor John Abraham and Akanksha Malhotra – the granddaughter of screen



legends Premnath and Bina Rai. The stars were filmed in the University Library, Students' Union and on the campus lawn, in front of the historic Georgian Fielding Johnson Building, which formed the majestic backdrop for a song sequence.

The story is about a boy from India meeting a girl from Pakistan at university, falling in love, and then returning to a political maelstrom back in south Asia. The film will be released in April. 📌



Online Bulletin: Issues are accessible on CWIS via <http://www.le.ac.uk/bulletin/>



# University of Leicester



# NEW CENTRES OF EXCELLENCE PLANNED FOR UNIVERSITY OF LEICESTER

## ► Biomedical Sciences Building

The plans, which are now well advanced, are for a £20 million building. The proposed new building will house research groups in:

- **Cardiovascular Science:** Carrying out heart research with the aim of improving knowledge and treatments of various conditions
- **Structural Biology:** Studying enzymes and cell signalling proteins, among other processes, which impact on health
- **Cell Signalling:** Examining cell signalling processes and receptors in neurones which are a major therapeutic target for the treatment of many diseases.
- **Neuroscience:** Analysing information transmission in the brain in order to gain greater understanding of the nervous system function and dysfunction.
- **Human Genetics:** Studying human

disease susceptibility genes. The building is designed for 250 researchers – 175 PhD students and post-doctoral fellows.

Professor Beeby added: "Our medical research and teaching provides direct benefits to the people of the region and beyond and we anticipate that this proposal will bring much valued expertise to bear upon fields of critical importance to human health."

## ► Addition to Space Research Centre

This new £3.7 million building, on three storeys, would principally house the Mathematical Modelling Centre. The Centre has come about due to a new £350,000 supercomputer at the University.

The University has established a Centre for Mathematical Modelling within the Faculty of Science and will link researchers in diverse disciplines such as Physics, Chemistry, Maths and Engineering. The 64-



*Vision: An artist's impression of the new Biomedical Sciences Building.*

processor shared memory parallel computer will be acquired thanks to funding from the Engineering and Physical Sciences Research Council special equipment initiative.

Pro-Vice-Chancellor Professor Will Light, said: "The computer will form the technical resource base for the Centre for Mathematical Modelling. When linked to a new PPARC facility

in the Department of Physics and Astronomy, Leicester will have a computational facility which is amongst the best in the world."

The extension of the Space Research Centre will also include facilities for a new astrophysics programme and a new Clean Room handling the latest generation of satellites. ☺

# EXPANSION PROGRAMME

(continued from page one)

in the country.

The total will be used to:

- Build a biomedical research building
- Erect an extension to the Space Research Centre to house, principally, the Mathematical Modelling Centre and provide additional accommodation for space science activity, including providing a new Clean Room
- Create additional space for Archaeology
- Redistribute Chemistry accommodation
- Create laboratories for Green Technology
- Provide equipment for Cardiovascular Research
- Equip new laboratories for biological sciences and psychology

Work on all projects is scheduled for completion during the 2003/4 academic year and will involve the University putting in place its own funding arrangements as well as seeking funding from outside parties.

Former Pro-Vice-Chancellor Professor John Beeby said the University would be putting £4.5 million –

from the SRIF funding – towards the building of the Biomedical Research centre that would 'top-up' the maximum funds made available by the Wellcome Trust. The remainder of the £20 million cost of the Biomedical Research Centre would be met from other sources.

Professor Beeby said the remaining SRIF money – £5.5m – would pay for the new building adjoining the Space Research Centre and other improvements on campus. He said: "This welcome investment by the Government and the Wellcome Trust in science research will help universities improve their science infrastructure. The combined total of £20 million allocated to the University of Leicester will allow us to keep our research in science, medicine and engineering at the forefront of the world.

"This cash injection will assist our laboratories to compete with those abroad, for example in the US, Germany and France by helping to update facilities and allowing Leicester to remain at the cutting edge of developments. It will lead to the



*Enhanced facilities: A new Clean Room is planned to add to accommodation at the Space Research Centre.*

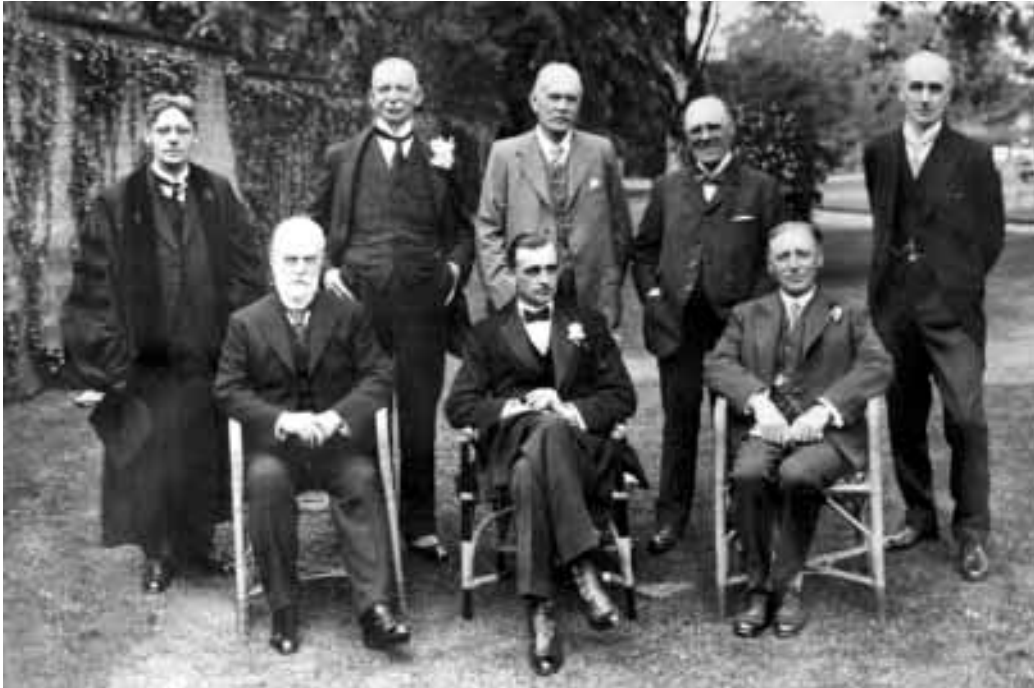
development of two new buildings for the University, adding to our growing international reputation for teaching and research."

Wellcome Trust Director Mike Dexter said: "Universities are the bedrock of UK scientific discovery, particularly in the biomedical field. But scientific research facilities in our universities became so run down over decades that there was a real danger of the country losing its scientific edge in the world.

"Big thinking and big money was required. The Wellcome Trust

pressed for a major investment to modernise research facilities and we put our money where our mouth was, investing £525 million over several years."

David Blunkett said: "A world-class research base requires world-class equipment and buildings. Science and technology research is an increasingly competitive field. We need to provide our talented university researchers with the facilities they require. This money shows our commitment to give universities the resources they need." ☺



*The College Council, 1926: Back row – Dr. R F Rattray, Sir Samuel Faire, C J Bond, Thomas Fielding-Johnson (junior), W G Gibbs. Front row – Sir Jonathan North, the 9th Duke of Rutland, Dr Astley Clarke.*

## MILESTONE FOR THE UNIVERSITY OF LEICESTER

► The University of Leicester celebrates its 80th Anniversary during this academic year – the University College admitted its first nine students, all women, on October 4, 1921.

Now, with more than 17,000 students, the University is rated in the top 20 in national league tables and has an international reputation for its teaching and research. The University is famed for such revolutionary discoveries as DNA genetic fingerprinting and for its world-class research in subjects including physics and astronomy and archaeology.

Leicester now stands as Britain's largest provider of postgraduate education – a far cry from those early days when students gathered for their first lectures.

Vice-Chancellor Professor Robert Burgess said: "The University of Leicester is entering a new era in its history.

"Our 80th anniversary marks a watershed in our development – an opportunity to reflect upon our achievements, to celebrate our successes and to build for the future.



"In this context, we are pleased to announce a £31 million expansion and improvement plan, creating two new buildings which will house centres of excellence in biomedical research, space science and mathematics.

"Coupled with this development is the creation of new laboratories and purchase of new equipment that will advance the University's standing in areas such as heart research, green technology, archaeology and chemistry."

Eminent figures including Lord Puttnam, Sir Harry Kroto, Paul Boateng and Sir John Stevens among others will deliver lectures at the University and, on November

12 in the presence of Lord Attenborough, the hall in the Richard Attenborough Centre – a unique centre for the arts and education – will be named after Diana, Princess of Wales in memory of her visit to the University in 1997.

The University has attracted the highest number of students ever in its 80 year history who will begin their courses during the Anniversary year. More than 4,000 students have started at the University, including about 3,000 undergraduates.

The University has achieved a record run of Excellent scores from external assessors for its teaching. In the last three years, every subject assessed has been rated excellent. Research income has topped £33million for the first time.

The University has grown and developed over the 80 years and is now one of the county's biggest employers with an annual turnover of over £130 million. There are more than 220 undergraduate and postgraduate degree programmes and outstanding departments in Law, the Arts and Humanities,

### 80th Anniversary commences with:

- Highest intake of students in University's History
- Announcement of £31m expansion and improvement plan
- Naming of hall in memory of Diana, Princess of Wales
- Record income for research activities
- Record run of excellence in teaching
- Year-long programme of events

### Events

Among the plans for the year are:

- An 80s retro night in the Students' Union
- An Anniversary Dinner on October 4
- Civic Receptions
- A live three-hour broadcast by BBC Radio Leicester
- Special Anniversary Lectures
- Art exhibitions and concerts
- Sports challenges
- The BA Science Festival
- Reunions

The programme of 80th Anniversary Events is listed on [www.le.ac.uk](http://www.le.ac.uk). Also see back page.

Social, Physical and Biological Sciences, Medicine and Education.

The University also houses 45 specialist centres as well as National centres of excellence and the School of Historical Studies is one of the largest centres of its type in England and Wales. The pioneering departments of English Local History and Museum Studies are the only postgraduate departments of their kind in the world and the Centre for Mass Communication Research is one of the oldest centres in the field. ☺



## Library receives Grant for Digitisation of Historical Sources

► The University Library has been awarded a grant of £335,000 from the New Opportunities Fund (NOF) for the digitisation of a large selection of eighteenth and nineteenth century local and trade directories from localities in England and Wales.

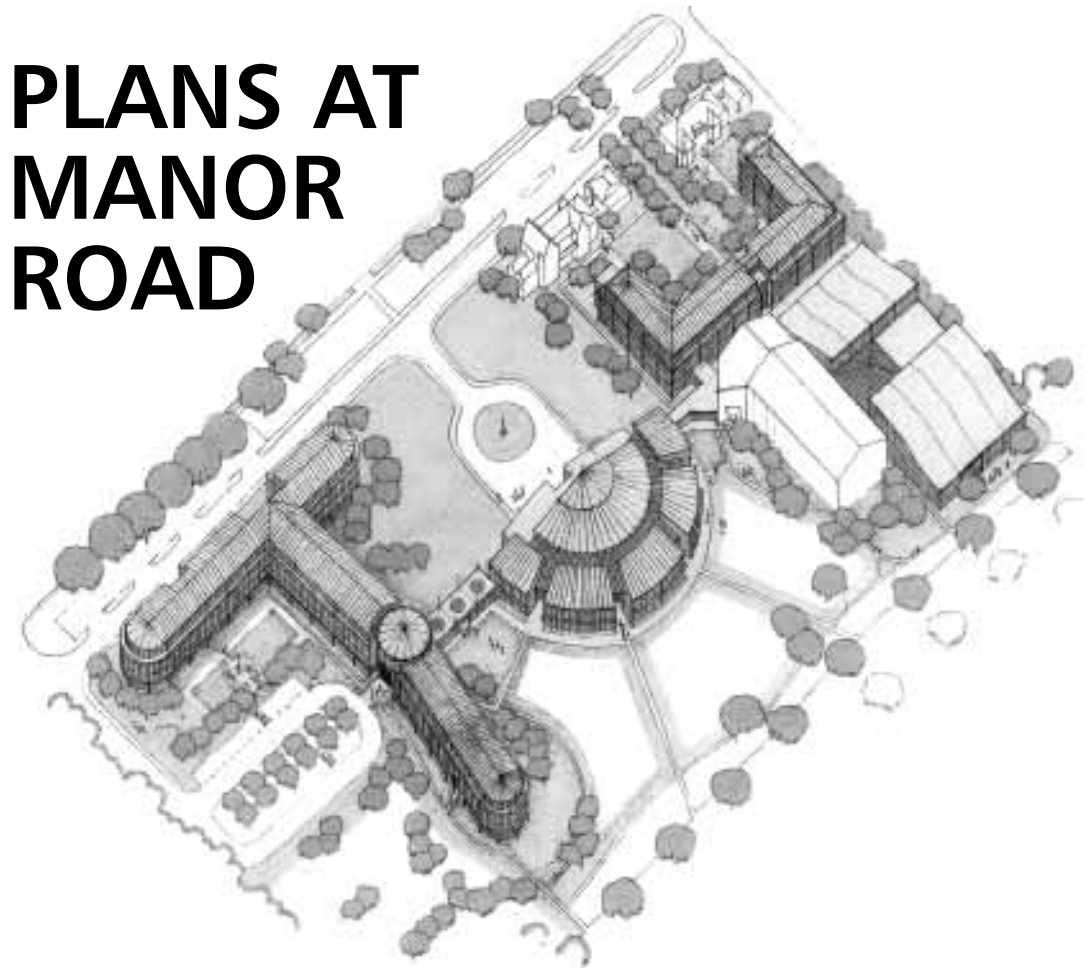
These historical sources are extremely useful to academic local and economic historians, as well as to school students, amateur genealogists and members of the public. The digitisation process will mean that exact reproductions of the volumes will become freely accessible online to anyone with an Internet connection. There will also be a powerful search engine available, so that occurrences of names, occupations, addresses and other words or phrases can be located to their exact places on the pages within the text.

In addition to some of the directories from the Library's own English Local History collection, volumes from many other libraries and record offices will be included in the project. Thus a digital library will be created which will be larger than the printed holdings of any individual institution. It is intended that 500 volumes, consisting of up to 400,000 printed pages, will be digitised during the two-year span of the project.

The NOF-digitise programme is a £50 million lottery-funded project to enable the digitisation of learning materials on a national basis. It will support the creation of computerised resources that have particular relevance for lifelong learning and education in its broadest sense. The project chosen by the University Library is one that has relevance to the burgeoning interest in genealogy and local history in the wider community, from designers of school projects to family historians, but which also has significant applications in student teaching and academic research.

The application was submitted by David Welding, Technical Services Librarian, who will be Project Director, with the encouragement and advice of Dr Timothy Hobbs, University Librarian. ☺

# PLANS AT MANOR ROAD



► The University has unveiled plans for enhanced sports facilities, management training and residences at its Manor Road, Oadby, site.

The University continually needs to invest in its facilities in order to maintain and improve its global position as a leading international university.

The quality and range of academic and student support facilities is of particular importance in recruiting students. By enhancing and augmenting existing facilities the University will ensure that it remains a firm choice for national and international applicants. This is essential in the increasingly competitive and global market for higher education.

The absence of a swimming pool at the University's sports complex is an omission highlighted by students.

The project proposes to expand facilities offered by the University of Leicester in four key areas of operation:

- Academic
- Sports
- Residential
- Management Training

Key developments proposed by the University include:

- 3,500 sqm of office/academic use space
- Academic Support Services
- Meeting and Seminar Rooms
- A 25m x 10m four-lane swimming pool

- Pool hall with sauna, steam room, spa pool and showers
- Activity room with sprung wooden floors for table tennis
- Gym with separate cardio-vascular areas
- Fitness assessment room
- Management training facility for 450
- Parking for approx 250 vehicles to support new facility and take existing parking off the road.
- 300 en-suite bedrooms of four-star standard

The University is engaging in a consultation process with residents before plans are submitted to Oadby and Wigston Council. ☺

## VICE-CHANCELLOR BIDS FAREWELL TO INTERNATIONAL POSTGRADUATE STUDENTS

► On the August 2 Professor Burgess, the Vice-Chancellor, hosted a Farewell party for international postgraduate students who are due to leave the University in the next few weeks. Approximately 50 post-graduate students attended and were keen to share their experiences of living in Britain and

studying at the University.

During the afternoon the Welfare Service provided information on 're-orientation' addressing both practical and emotional issues which international students may encounter when returning to their home country. The Careers Service also contributed to this useful advice.

The Graduate Relations Officer was on hand to provide information about how graduates can maintain contact with the University. Professor Barker, the Graduate Dean and Graduate Office staff provided information and literature relating to distance learning courses, encouraging students to continue their studies. ☺



▶ LECTURES

## Professorial Inaugural Lectures



▶ All Inaugural Lectures take place at 5.30 pm in Lecture Theatre 1 of the Ken Edwards Building. Lectures are open to the public and free.

### Tuesday October 16

Life and Death on Chromosome 14: Adventures with Immunoglobulin Genes. Professor Martin Dyer, Department of Pathology.

### Tuesday October 30

The Aurora – Nature's Lightshow. Professor Mark Lester, Department of Physics and Astronomy.

### Tuesday November 13

Do the Ends Justify the Means: A History of Telomeres from Yeast to Man. Professor Ed Louis, Department of Genetics.

### Tuesday November 19

Emotion in Social Life and Social Theory: Recovering the Leicester Tradition. Professor Jack Barbalet, Department of Sociology.

### Tuesday December 11

Professor Steffen Koenig, Department of Mathematics and Computer Science. ☺



Debuts: Professor Ed Louis (top), Professor Jack Barbalet (above)

▶ APPOINTMENTS

## Director of Studies

▶ The University of Leicester Institute of Lifelong Learning has appointed Dr Paul Poplawski as Director of Studies at Vaughan College. Dr Poplawski was previously Senior Lecturer in English and Director of the MA in Creative Writing at Trinity College, Carmarthen.

He has an international reputa-

tion as a D H Lawrence scholar and has published several books on the author. He has also written a book on Jane Austen and is currently editing an Encyclopaedia of Literary Modernism. He is eager to expand Vaughan College's portfolio of courses and to widen participation within local communities. ☺

## Development Officer

▶ Steven Pegg has been appointed to the new post of Development Officer with the University of Leicester Richard Attenborough Centre. He is responsible for developing fundraising potential through corporate sponsorships, grants, individual giving and collaborative initiatives.

His work will enable the Centre to maximise its commitment to provide arts-based lifelong learning opportunities for people with and without disabilities. Steven joined the Centre last year as Performing Arts Co-ordinator, and now pursues the two roles concurrently. ☺

▶ RETIREMENTS

## Years of loyal and devoted service



▶ Past and present Certificate of Archaeology students joined part-time tutors and colleagues at Vaughan College on Thursday, June 28 to say farewell to Tony Brown of the Department of Adult Education. Tony, who has been Director of the Certificate of Archaeology for many years, retired from the University at the end of September.

In making a presentation to Tony, Tim Schadla Hall promised a surprise guest – and later in the evening Harvey Sheldon of Birk-

*Ground Force: Harvey Sheldon (left) and Certificate in Archaeology course part-time tutor, Certificate in Archaeology course, Tim Schadla-Hall (right), with Tony Brown.*

beck College joined in the celebrations. Tony Brown paid tribute to the many part-time tutors who had worked with him at Vaughan College and elsewhere. This was a really enjoyable evening and an opportunity for Tony and others to renew old acquaintances over a glass of wine and refreshments. ☺

*Diane May*

## Valued contribution to learning



▶ On Friday, August 31, staff at the Institute of Lifelong Learning's Northampton Centre bade farewell to a much-loved colleague.

After many years of loyal and devoted service, Chief Clerk Christine Hayward retired. A small ceremony was held to mark the occasion and to wish Christine well in her future life. She

*Central Figure: Christine Hayward is presented with flowers by Senior Clerk Dot Ketteman and Chair of the Friends of Northampton Centre, Miss Phyllis Annis.*

was presented with a gift token, marking her colleagues' appreciation of her enormous contribution to the life of the Centre. ☺

*Ian Foster*



# Obituaries

► The University has learnt, with regret, of the death of the following:

## SIR JOHN (PATRICK) LOWRY, C.B.E.

Sir Pat Lowry died on May 30, aged 81. During his career he was Chairman of ACAS, a member of the Universities Academic Salaries Committee and, from 1987-89, President of the Institute of Personnel Management. He became a Fellow of the Royal Society of Arts in 1984, and was awarded the honorary degree of Doctor of Laws from this University in the same year. He received a knighthood in 1985. He was a former pupil of Leicester's Wyggeston Grammar School.

## DR JOHN H McDONALD WHITAKER, F.G.S.

Dr John 'Mac' Whitaker, died on September 11 at the age of 80 after a long illness. Mac was appointed in 1951 as the first lecturer in Geology within the Department of Geography. He developed and taught courses in all aspects of geology, set up laboratories and made appointments including Trevor Ford, Tony Evans and Bob King. By 1954 Geology became an independent Department which flourished under Mac, and later Peter Sylvester-Bradley, to become one of the country's leading teaching and research departments. Mac was a key member until his retirement in 1985.

Mac was educated at the Perse School, Cambridge and immediately afterwards started war service with the Cambridge Instrument Company. From 1940-45 he was an Experimental Assistant on nerve gases with the Chemical Inspection Department of the Ministry of Supply. After the war he went to Cambridge to read Natural Sciences, intending to graduate in Chemistry, but, as a keen climber, became excited by Geology and changed direction. He won the Shell and Wilshire Prizes in consecutive years, graduated in Geology with Mineralogy and Petrology and also completed a London degree with first class Honours. Immediately after graduating, Mac was appointed to an

Assistant Lectureship at the University of Manchester and on its termination came to Leicester.

His early researches were in Palaeozoic stratigraphy – especially the Silurian and Devonian rocks of the Welsh Borders and Southern Norway – and sedimentology, particularly in primary sedimentary structures as indicators of palaeocurrents and ancient environments. He did a PhD at Leicester on The Silurian and Lower Devonian Geology of Ringerike, Norway, where he spent a year on a Scholarship. He later worked in Japan with their leading sedimentologist, Professor Happy Okada, on the sediments of the Shimanto Belt and developed a continuing interest in trench and fore-arc environments.

Mac was always quick to use the latest techniques in his teaching and research. His approach to the 'integrated analysis' of sediments involved hand-specimen study, the preparation of thin and polished sections, point counting, cathodoluminescence, X-ray diffraction, scanning electron microscopy and energy-dispersion analysis to the each sample. Each method gave different but incomplete information but together they gave the detailed data which are crucial in assessing the value of possible oil reservoirs. He was an early authority on the Brent Sandstone Formation, and his expertise was in demand by oil companies.

He gave sterling service to the Department, the University, and the geological and the local communities. At Leicester he embarked on the mammoth task of designing laboratories and courses, building up the library, and planning field courses. His energy and enthusiasm were demonstrated by the way he conducted all the departmental administration and served on innumerable Boards and Committees. He was a cheerful and enthusiastic Head. In the city, he was a Council member of the Leicester Literary and Philosophical Society and a strong promoter



*Dr John H McDonald Whitaker*

of its Geological Section, of which he became Chairman.

After his retirement, he and Peter Smith initiated and edited *Geology Today*, the magazine of the Geological Society of which he was a Senior Fellow. He was an active member of the British Sedimentological Research Group for whom he organised meetings, and of the Petroleum Exploration Society of Great Britain.

Mac was a keen traveller and enjoyed mountaineering and skiing. His other interests included photography and playing the clarinet. He loved listening to music and initiated a long series of popular Friday lunch-time gramophone concerts at which his many friends were cajoled into presenting their favourite recordings. He is survived by his wife, Marian, whom he married in 1954, and their two sons, Robert and Peter, who were regular geological travelling companions.

*Professor M A Khan*

## DR G G N MACKENZIE

Dr Gavin Mackenzie died on Tuesday, September 18, aged 59. Dr Mackenzie read Sociology at the University of Leicester, graduating in 1964. In 1968 he was appointed to a Lectureship in the Department of Sociology at Leicester, and left in December 1970 to take up a post in Cambridge.

More recently, Dr Mackenzie, as a senior member of Saxton Bampfylde Hever, had assisted the University in connection with the appointment of the present Vice-Chancellor and the Dean of Leicester Warwick Medical School.

The funeral service was held at St Martin-in-the-Fields, London, on Friday, September 28. No flowers but donations can be sent to the British Heart Foundation at 14 Fitzhardinge Street, London, W1H 6DH. A memorial service will be held at a later date.

## MR R J FITCHES

Robert John Fitches, who graduated in 1997 from this University with a degree in Engineering, died in September. Mr Fitches had recently returned to Leicester to register for an MSc in Engineering. His funeral took place at Cherry Hinton United Reformed Church, Cambridge, on October 1. ☹

## DEATH NOTICES

**Information about the death of a member of the University's staff or a student (past or present) should be given to Vivienne Paul, the Registrar's Secretary, who will ensure that the details are disseminated throughout the University via CWIS. Her telephone number is 0116 252 2411.**



## OCTOBER

### Wednesday October 10

► Music at the University of Leicester: Special Event – The Charles Moore Collection of Musical Instruments. Selected instruments can be tried out – also the Curator will be available to identify musical instruments. 11.00 am – 2.30 pm, Room 1806, 18th floor, Attenborough Building.

### Saturday October 13

► Music at the University of Leicester: Special Event. Eastwards and Westwards from Mozart to Haydn. Robert Meikle explores some of the works in the forthcoming Lindsay series. 2.00 pm – 5.00 pm, Music Room, 10th floor, Charles Wilson Building. Tickets £5 (includes tea and biscuits). For further details ring 0116 252 2781.

### Saturday October 13

► Evening Concert: Leslie Howard (piano). Celebrity Recital. Music by Mendelssohn, Gade, Greig, Liszt, Prokofiev. In association with Catalyst Music Promotions. 7.30 pm, Fraser Noble Hall. Tickets £12 (£10, £5). For further details ring 0116 252 2781.

### Sunday October 14

► Music at the Richard Attenborough Centre: The Voice of Verdi. Lead by Opera North's Community and Education Department, Opera Direct. A day of focus on Verdi (morning session – creating an operatic scena, afternoon masterclass – scenes from a Verdi opera by professional singers). 10.00 am – 12.30 pm and 1.30 pm – 4.00 pm, Richard Attenborough Centre. £10 (all day), £6 (afternoon only). For further information phone 0116 252 2455.

### Tuesday October 16

► Leicester Early Modern Seminar: The Popular Acculturation of the Elizabethan Poor Laws. Steve Hindle, University of Warwick. 5.30 pm, History of Art Slide Room, Attenborough 1707. Refreshments available. All welcome. Further details from John Coffey (jrdc1@le.ac.uk).

### Wednesday October 17

► Evening Concert: Lindsay series. Music by Haydn, Shostakovich, Borodin. 7.30 pm, Fraser Noble Hall. Tickets £12 (£10, £3.50). For

booking details and further information ring 0116 252 2781.

### Saturday October 20

► Evening Concert: The Cecilian Singers. Music from around the world, including a new work by Francis Silkestone. 7.30 pm, Fraser Noble Hall. Tickets £7.50 (£5.50, £2.50). For further details ring 0116 252 2781.

### Wednesday October 23

► School of Archaeology and Ancient History: First Dorothy Buchan Memorial Lecture. Cleopatras on Film or Did the Greeks Ever Get to Egypt? Dr Lloyd Llewellyn-Jones, Cardiff University and Open University. 6.00 pm, Ken Edwards Building. Open to the public and free. For further details and to contribute to the lecture fund contact Mrs Janet Bradford on 0116 252 2777.

### Monday October 29

► Departmental Staff Common Room Association: Annual General Meeting. 1.00 pm, Departmental Staff Common Room, 2nd floor, Charles Wilson Building. Nominations for the Committee (Chair vacant) should be sent to the Honorary Secretary, Barbara Wright (Pro-Vice-Chancellor's Office), before the meeting.

### Wednesday October 31

► Lunchtime Performance: Spotlight. Queen Elizabeth I and Wyggeston College students perform new drama devised in collaboration with metro-boulot-dodo theatre company. 12.45 pm – 1.45 pm, Richard Attenborough Centre, Lancaster Road. Admission free. Snacks available from 12.30 pm. Ring 0116 252 2455 for more information.

## NOVEMBER

### Saturday November 2

► University World Faiths Group: Day Conference. Abraham – A Model for Humanity. 10 am – 7.30 pm, Queen's Hall, main campus. £25 waged, £5 unwaged/student (includes 2 meals). To book, ring the Chaplaincy on 0116 285 6493, email chaplaincy@le.ac.uk

### Tuesday November 6

► Leicester Early Modern Seminar: Seminar by Rafael Torres Sanchez, University of Navarra. 5.30 pm, History of Art Slide Room, Attenborough

1707. Refreshments available. All welcome. Further details from John Coffey (jrdc1@le.ac.uk).

### Wednesday November 7

► Evening Concert: Lindsay series. Mozart, Smetana, Tchaikovsky. 7.30 pm, Fraser Noble Hall. Tickets £12 (£10, £3.50). For booking details and further information ring 0116 252 2781.

### Wednesday November 14

► Lunchtime Performance: Spotlight. Leicester University Theatre. Preview of forthcoming production of The Pitchfork Disney by Philip Ridley. 12.45 pm – 1.45 pm, Richard Attenborough Centre, Lancaster Road. Admission free. Snacks available from 12.30 pm. Ring 0116 252 2455 for more information.

### Saturday November 17

► Evening Concert: University Singers and Proteus Chamber Orchestra, with Sophie Cash (oboe). 7.30 pm, Fraser Noble Hall. Preceded at 6.20 pm by Composers in Conversation (James Walker and Anthony Pither) discussing their new works. Tickets £7.50 (£5.50, £2.50). For details ring 0116 252 2781.

### Wednesday November 21

► Lunchtime Performance: Spotlight. Elizabeth Babbs (poet, author, broadcaster), Candy Hadler (dancer). A journey of hope inspired by Elizabeth's experience of ME. 12.45 pm – 1.45 pm, Richard Attenborough Centre, Lancaster Road. Admission free. Snacks available from 12.30 pm. Ring 0116 252 2455 for more information.

### Saturday November 24

► Evening Concert: University Wind Band. 7.30 pm, Fraser Noble Hall. Tickets £5 (£2.50). For details ring 0116 252 2781.

### Tuesday November 27

► Lunchtime Soundbite: University of Leicester students play chamber music. 12.45 pm, Music Room, 10th floor Charles Wilson Building. £2.50 (free admission for students). For details phone 0116 252 2781.

### Wednesday November 28

► Evening Concert: Lindsay series. Haydn, Hugh Wood, Smetana. Hugh Wood will introduce his new quartet during the concert. 7.30 pm, Fraser Noble Hall. Tickets £12 (£10, £3.50). For booking details and further information ring 0116 252 2781.

## DECEMBER

### Saturday December 1

► Evening Concert: University Orchestral Society, with Kate Mlynar (saxophone). Brahms, Michael Kamen. 7.30 pm, Fraser Noble Hall. Tickets £5 (£2.50). For details ring 0116 252 2781.

### Wednesday December 5

► Carol Concert, directed and presented by Robert Kenny. 7.30 pm, Fraser Noble Hall. Tickets £5. For details ring 0116 252 2781.

### Saturday December 8

► Evening Concert: The Leicester Royal Infirmary Charity Appeals Concert. The University Choral Society and Proteus Chamber Orchestra with Diana Sharp (soprano) and Anne de Graeve (organ). Music by Bach, Rutter, Poulenc. 7.30 pm, Church of St James the Greater. Tickets £10 (£7.50). Ring 0116 252 2781 for details.

### Sunday December 9

► Annual Carol Service. 3.00 pm, Digby Hall, Stoughton Drive South. Everyone welcome. ☺

## WINNERS OF PRIZE CROSSWORD 55

A three course lunch for two in the Carvery, donated by the University of Leicester Catering Services – Colin Ferris, Biology; £15 book token, donated by the University of Leicester Bookshop – Colin Travis, Biomedical Services; £10 book voucher from Smith's – Mavis Loseby, School of Social Work, Professor D R Jones, Epidemiology and Public Health, Mrs S Hill, Library; a bottle of wine, courtesy of the Bulletin – Liz Madder, Biological Sciences; £5 book token, courtesy of the Bulletin – Nick Nelms, Space Research Centre; presentation sets of Royal Mail stamps – Judith Malcolmson, Department of Law, John Smith, Centre for Urban History, Angela Salisbury, Library (Stack Services).



# THE UNIVERSITY OF LEICESTER'S 80TH ANNIVERSARY

Timetable of events: October – December 2001

► For the whole of this academic year, the University of Leicester will be celebrating its 80th Anniversary with special celebratory events to commemorate the historic occasion when the first university was created in Leicester as a University College. The following timetable of events appears on the University's external and internal pages. Planned events can be viewed on [www.le.ac.uk](http://www.le.ac.uk).

## Thursday October 4 (80th Anniversary Day)

- 80th Anniversary Celebration Dinner (for associates of the University and current staff and students). 7.30 pm for 8.00 pm, Charles Wilson Building.
- BBC Radio Leicester Live Broadcast. 9 am – 12 pm, University campus.
- (Thursday October 4 onwards) Display of Archives. Library and Fielding Johnson Building. Permanent showcase in the Library throughout October.

## Saturday October 6

- Anniversary Concert: Music for Percussion by International Composers of the 20th Century. Alonso Mendoza, Musician in Residence, Richard Attenborough Centre. 7.30 pm, Richard Attenborough Centre. Tickets £7.50, £6, £5. For further details ring 0116 252 2455.

## Thursday October 11

- Medieval Research Centre Lecture: Rough Girls and Squeamish Boys: The Trouble with Absolon in Chaucer's Miller's Tale. Professor Greg Walker, Department of English. 5.30 pm, Lecture Theatre 3, Ken Edwards Building. For further details contact Professor Walker on 0116 252 2620.

## Thursday October 18

- Medieval Research Centre Lecture: The Stereotype Confirmed?: Chaucer's

Wife of Bath. Dr Elaine Treharne, Department of English. 5.30 pm, Lecture Theatre 3, Ken Edwards Building. For further details contact Professor Walker on 0116 252 2620.

## Wednesday October 24

- County Council Civic Dinner.

## Thursday October 25

- Medieval Research Centre Lecture: 'Cursed Folk of Herodes al new'. The Ritual Murder Myth in England and Chaucer's Prioress. Dr Anne-Marie D'Arcy, Department of English. 5.30 pm, Lecture Theatre 3, Ken Edwards Building. For further details contact Professor Walker on 0116 252 2620.

## Thursday October 25

- Medieval Research Centre Lecture: Writing the Clock: Literature and the Mechanical Timekeeper in the Late Middle Ages. Professor John Scattergood, Trinity College, Dublin. 5.30 pm, Lecture Theatre 3, Ken Edwards Building. For further details contact Professor Walker on 0116 252 2620.

## Thursday November 1

- Graduates' Annual Reunion in London at the Cabinet War Rooms, Whitehall at 7.00 pm. Reception, buffet and private viewing for members of the Leicester Graduates' Association. Booking essential. Tickets £23 (includes



November 19: Sir John Stevens.

entrance fee, drinks and buffet meal). Enquiries to Kathryn Whitehurst, Graduate Relations (0116 252 2195).

## Monday November 5 – Friday December 12

- Landscape Exhibition: As Far As The Eye Can See. Paintings, drawings and sculpture based on landscape sources. Richard Attenborough Centre. For further details ring 0116 252 2455.

## Thursday November 7

- Medieval Research Centre Lecture: 'Shadows Made of Wood and Stone': The Destruction of English Medieval Sculpture. Dr Phillip Lindley, Department of History of Art. 5.30 pm, Lecture Theatre 3, Ken Edwards Building. For further details contact Professor Walker on 0116 252 2620.

## Monday November 12

- Public Lecture to be given by Lord

Puttnam. Richard Attenborough Centre. To reserve seats please contact 0116 252 2455.

## Wednesday November 14

- History Lecture: The University in the Middle Ages and Reformation. Professor Norman Housley, Department of History. 5.30 pm, Ken Edwards Lecture Theatre 3. Open to the public and free.

## Monday November 19

- Law School Lecture to be given by Sir John Stevens. 5.30 pm, Lecture Theatre 1, Ken Edwards Building.

## Wednesday November 21

- History Lecture: The University in the European Enlightenment. Dr Martin Davies, Department of English. 5.30 pm, Ken Edwards Lecture Theatre 3. Open to the public and free.

## Wednesday November 28

- History Lecture: The University in the Nineteenth Century. Professor William Brock. 5.30 pm, Ken Edwards Lecture Theatre 3. Open to the public and free.

## Wednesday December 5

- History Lecture: The University in the Twentieth Century. Professor Aubrey Newman. 5.30 pm, Ken Edwards Lecture Theatre 3. Open to the public and free.

## Winter season

- Sports Event: Staff v Students Team Challenge. Various venues around campus. Contact Colin Hide on 0116 271 9144 for details. ☺

### BULLETIN

**Editor:** Ather Mirza (3335)  
pressoffice@le.ac.uk

**Deputy Editor:** Barbara Whiteman (2676)  
ara@le.ac.uk

**Journalist:** Jane Pearson (2440)  
jhp1@le.ac.uk

**Design:** Chris Ward, AVS Graphics

**Pictures:** AVS Photography

**Printed by:** AVS Print

Small Advertisements are carried if space permits. Please send advertisements to Press and Public Relations Office.

Prices for display advertisements are available on request from Kathryn Irving, Marketing Officer, Students' Union (1150).

The University of Leicester does not necessari-

ly adopt or endorse the products and services advertised in Bulletin. The Editor reserves the right to refuse/amend any advertisement without notice.

**Address:** University of Leicester,  
University Road, Leicester, LE1 7RH